



Cassette awning

## **markilux ES-1**

The designer awning made of stainless steel.

**markilux by Aquarius Blinds**



product  
design award



reddot design award  
winner 2001

[www.aqblinds.co.uk](http://www.aqblinds.co.uk) - 0800 953 0199

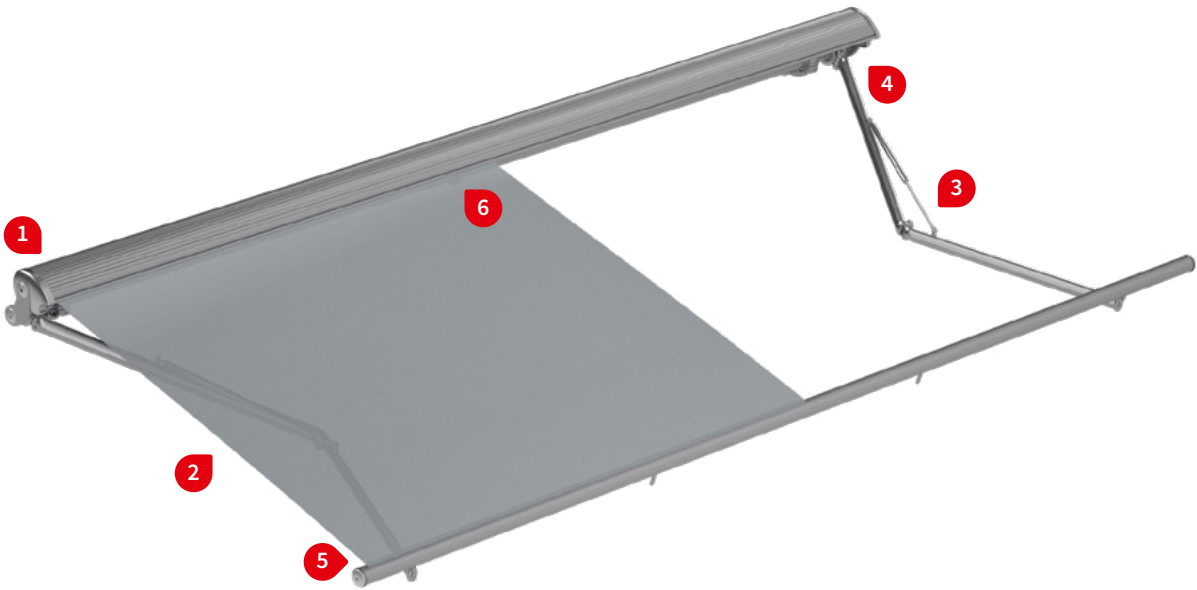
**markilux**

safe timeless beautiful

01  
02  
03  
04  
05  
06  
07  
08  
09  
10  
11  
12  
13  
14  
15  
16  
17

Product characteristics

Wind resistance class 2  
Beaufort 5 → 7.5–10.4 m/s → 28–37 km/h → 17–23 mph



1 face fixture



1 top fixture



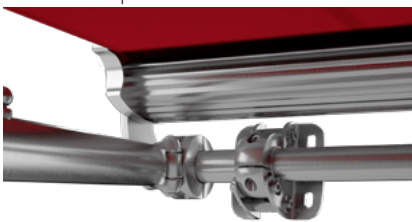
2 during extension



3 folding arm with gas piston



4 attachment of the arm to the torque bar



5 arm connection to the front profile



1 face fixture, maximum pitch 30°



6 coverboard support with bracket, use for unit widths 451–500 cm



6 rolltex bearing (only for units from a width of 501 cm)



# Product characteristics

## Description

- worldwide the only awning made completely of matt-brushed, marine grade stainless steel! The awning meeting special requirements as a design object or for use in locations with special climatic conditions.

## Special features

- the material quality meets high demands of corrosion resistance
- surrounding coverboard made of marine grade stainless steel – covering the roller tube for the internal protection of the awning fabric
- coverboard profile uniquely wave-shaped – this leads to effects of light refraction and underlining of the noble optics
- excellent tension of the folding arms provided by marine grade stainless steel gas pistons -ensuring optimal cover tension in any phase of extension
- front profile, torque bar and roller tube are extremely resistant to deflection and twist thanks to their dimensions
- pitch adjustment by means of the fixture brackets – thus constant perfect closing behaviour of the awning regardless of the inclination

## Dimensions

- cassette in the standard version: depth 250 mm, height 285 mm
- single unit: minimum width 236 cm at the smallest projection of 200 cm  
maximum width 600 cm at the largest projection of 350 cm or 650 cm at a maximum projection of 300 cm

## Roller tube and lateral arm bearers

- strongest round roller tube Ø 95 mm with keyway, stainless steel – excellent stability, ensures near perfect cover performance even at the largest widths
- well-designed roller support brackets made of marine grade stainless steel

## Awning profiles

- all profiles in stainless steel have a brushed finish
- surrounding coverboard in two parts, made of marine grade stainless steel
- circular front profile Ø 60 mm made of marine grade stainless steel, with keyway for a valance
- circular torque bar Ø 50 mm made of marine grade stainless steel

## Folding arms

- folding arms made of marine grade stainless steel, visible surface with a brushed finish, with top mounted marine grade stainless steel gas pistons ensuring optimal arm pressure
- joint parts made of high-strength drop-forged stainless steel – visually merging into the arm profiles without any seams
- pivot bolts in stainless steel run in Teflon-coated bronze bushes – practically maintenance free, virtually silent and extremely hard-wearing

## Side caps


- side cap of the awning as a deep-drawn part made of marine grade stainless steel
- end caps of torque bar, roller support bracket and front profile made of massive marine grade stainless steel

## Fixture brackets

- face fixture, top fixture, eaves fixture
- high-strength marine grade stainless steel
- pitch range 0°–30°, infinitely adjustable

## Dimensions and configuration options

### Single unit

|                  |     | Overall awning width |     |     |     |     |     |     |     | Minimum width |   |
|------------------|-----|----------------------|-----|-----|-----|-----|-----|-----|-----|---------------|---|
|                  |     | 250                  | 300 | 350 | 400 | 450 | 500 | 550 | 600 | 650           | Motor   |
| Order dimensions |     | 236                  | 251 | 301 | 351 | 401 | 451 | 501 | 551 | 601           |  |
|                  |     | 250                  | 300 | 350 | 400 | 450 | 500 | 550 | 600 | 650           |   |
| H                | 250 | —                    | 1)  |     |     |     | 2)  |     |     |               | 286   |
|                  | 300 | —                    | —   | 1)  |     |     | 2)  |     |     |               | 336   |
|                  | 350 | —                    | —   | —   | 1)  |     | 2)  |     |     | —             | 386   |

dimensions in cm


1) = please note the minimum widths!


2) = in the case of face and top fixture: 2 brackets

+ 1 coverboard support with bracket in the case of eaves fixture: 3 eaves fixture brackets

H = extension

 = 2 standard arms, 2 fixture brackets

 = 2 standard arms, 3 fixture brackets, 1 rolltex bearing

 = 2 standard arms

### Operation

standard optional

|  |   |   |
|--|---|---|
| crank handle   | — | — |
| spring-assisted crank handle                                   | — | — |
| hard-wired motor   | — | — |
| silentec motor (optionally with an external io / RTS receiver) | — | — |
| radio-controlled motor io, 868 MHz                             | ✓ | — |
| radio-controlled motor RTS, 433 MHz                            | — | ✓ |
| radio-controlled motor RTS, 433 MHz with manual override       | — | — |

### Coupled Awning

not available

### Awning cover

fabric range no.

standard optional

|                       |                               |   |   |
|-----------------------|-------------------------------|---|---|
| sunvas                | 301.. / 309..-315..           | ✓ | — |
| perla                 | 370..                         | — | ✓ |
| sunsilk               | 324.. / 325.. / 328.. / 369.. | ✓ | — |
| perla FR              | 374.. / 375..                 | — | ✓ |
| perfortex             | 331.. / 332..                 | — | — |
| transolair            | 338..                         | — | — |
| vuscreen Alu          | 317..                         | — | — |
| Soltis Perform 92     | 92-20..                       | — | — |
| glass fibre screen    | 272..                         | — | — |
| valance, height 20 cm |                               | ✓ | — |

### Shadeplus / drop valance

not available



Optional accessories

|  |
|--|
| valance  |
| infrared heater 2000 W / 2500 W  |
| infrared heater 2500 W with integrated radio-controlled receiver 868 MHz io  |
| LED spotline – light bar 110 × 70 mm with 5 W LED spotlights, width 180 cm / 3 spots or 300 cm / 5 spots   |
| LED spotline io – light bar 110 × 70 mm with 5 W LED spotlights with integrated dimmable radio-controlled receiver, width 180 cm / 3 spots or 300 cm / 5 spots |
| automatic controls (light, wind, rain)   |

**N.B!** – Important background information can be found in the chapter “Optional Accessories”.

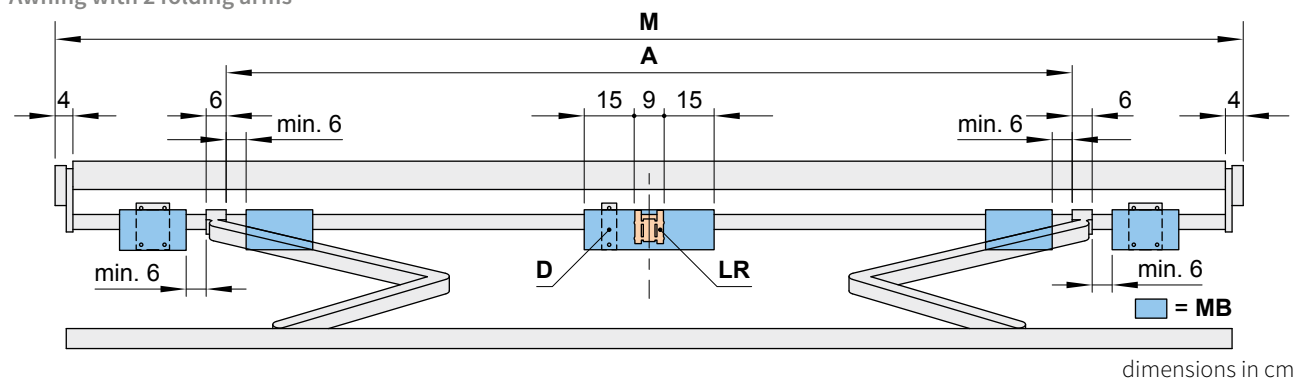
Fixture options

|  |        |
|--|--------|
| wall bracket 155 mm                              | 744341 |
| face fixture brackets for rolltex bearing 155 mm | 746761 |
| support assembly with wall fixture bracket       | 746331 |
| top fixture bracket 155 mm                       | 745791 |
| top fixture bracket for rolltex bearing 155 mm   | 746771 |
| support assembly with top fixture bracket        | 746341 |
| eaves fixture bracket                            | 745851 |
| eaves fixture bracket                            | 746781 |



## Bracket fixture range

Awning with 2 folding arms



|                  |     | Overall awning width |                   |                   |                   |     |     |     |     |     |
|------------------|-----|----------------------|-------------------|-------------------|-------------------|-----|-----|-----|-----|-----|
|                  |     | 250                  | 300               | 350               | 400               | 450 | 500 | 550 | 600 | 650 |
| Order dimensions |     | 236                  | 251               | 301               | 351               | 401 | 451 | 501 | 551 | 601 |
|                  |     | 250                  | 300               | 350               | 400               | 450 | 500 | 550 | 600 | 650 |
|                  |     | Arm position A       |                   |                   |                   |     |     |     |     |     |
| H                | 200 | 214 <sup>1)</sup>    | 229               | 262               | 292               | 332 | 372 | 407 | 442 | 472 |
|                  | 250 | —                    | 264 <sup>1)</sup> | 379               | 292               | 332 | 372 | 407 | 442 | 472 |
|                  | 300 | —                    | —                 | 314 <sup>1)</sup> | 329               | 332 | 372 | 407 | 442 | 472 |
|                  | 350 | —                    | —                 | —                 | 364 <sup>1)</sup> | 379 | 387 | 407 | 442 | —   |

dimensions in cm

|    |     | BHT | No. of brackets   No. of fixing points |        |        |
|----|-----|-----|--|--------|--------|
| W  | 155 |     | 2   8                                  | 2   8  | 3   12 |
| D  |     |     | —                                      | 1   1  |        |
| DE | 155 |     | 2   8                                  | 2   8  | 3   12 |
| D  |     |     | —                                      | 1   1  |        |
| DA | 90  |     | 2   8                                  | 3   12 | 3   12 |

dimensions in mm

If the brackets cannot be positioned in accordance with this table, make sure the actual dimensions are noted on the order form!

1) = please note the minimum widths! In the case of small awnings the brackets can only be fitted inside the arms, i.e. the position denoted by measurement A.

A = arm position

BHT = bracket width

D = support assembly

DA = eaves fixture bracket

DE = top fixture bracket

H = *order width* = extension

LR = rolltex bearing

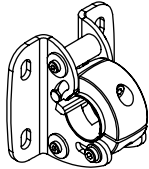
M = *order dimension* = awning width

MB = bracket fixture range

W = face fixture brackets

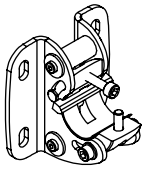
Face fixture

Fixtures, fittings and accessories




face fixture brackets  
155 mm

**744341**



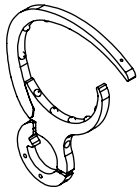
face fixture brackets  
155 mm  
for rolltex bearing

**746761**



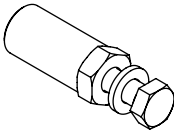
support assembly  
with wall fixture bracket <sup>1)</sup>

**746331**



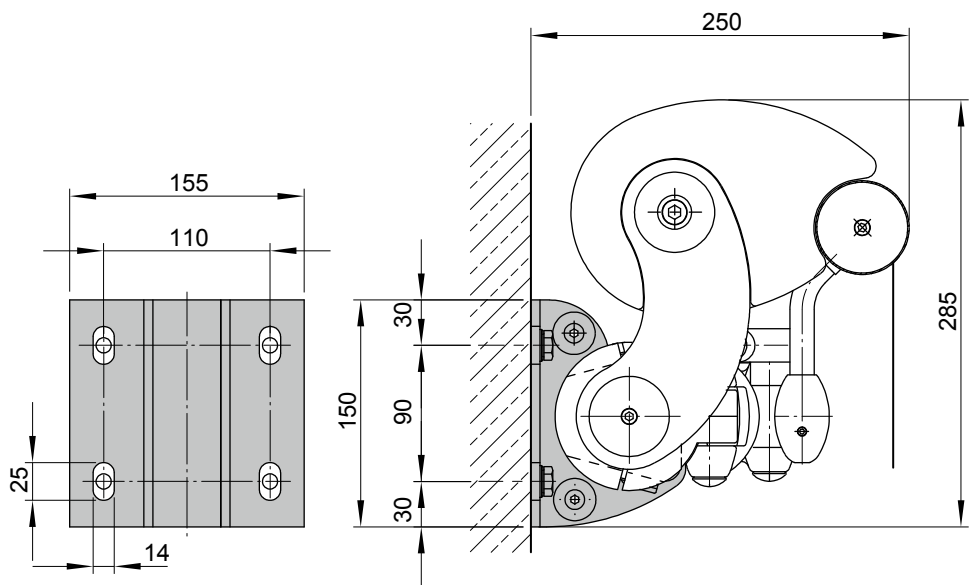
storm safety clip  
**N.B!** to be recommended  
in windy locations

**725461**



bolt reduction assembly  
pack 10 pcs

M 16 → M 12 | M 16 → M 10 | M 12 → M 10 | M 10 → M 10



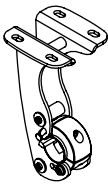
1) included with the delivery

dimensions in mm

01  
02  
03  
04  
05  
06  
07  
08  
09  
10  
11  
12  
13  
14  
15  
16  
17

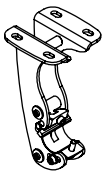
# Top fixture

## Fixtures, fittings and accessories



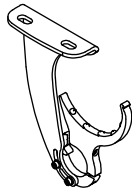
top fixture bracket  
155 mm

745791



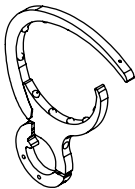
top fixture bracket  
155 mm  
for rolltex bearing

746771



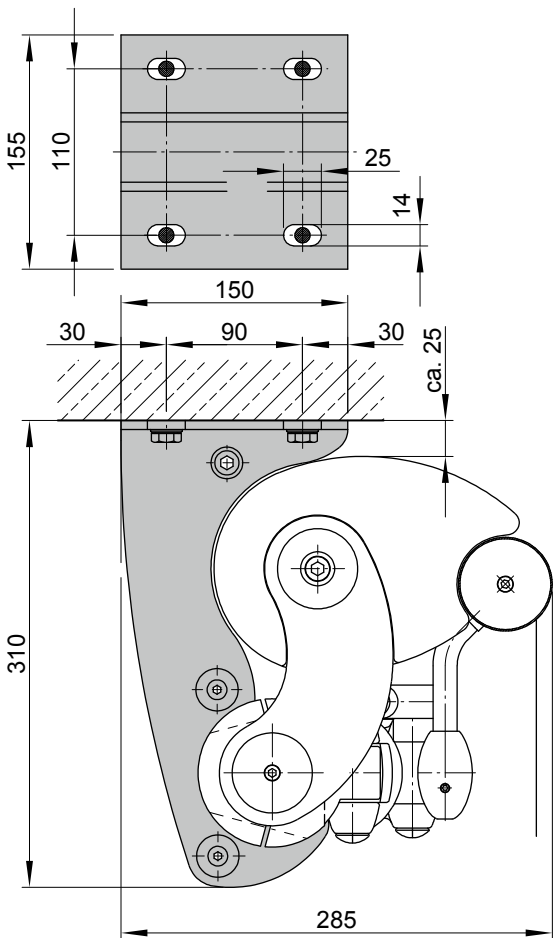
support assembly  
with top fixture bracket <sup>1)</sup>

746341



storm safety clip  
**N.B!** to be recommended  
in windy locations

725461



1) included with the delivery

dimensions in mm



## 01

## 02



90 mm

745851



90 mm

for rolltex bearing

746781



**N.B!** to be recommended  
in windy locations

725461



05

06

07

08

09

10

11

12

13

14

15

16

17

dimensions in mm

01 Face fixture, dimensions at different pitch positions

02

03

04

05

06

07

08

09

10

11

12

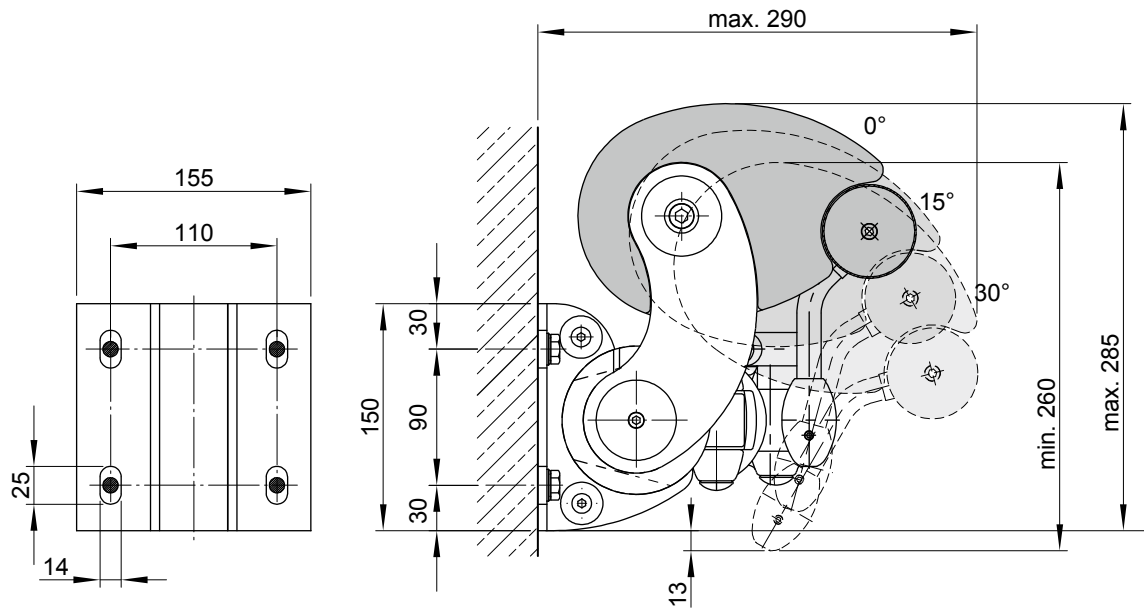
13

14

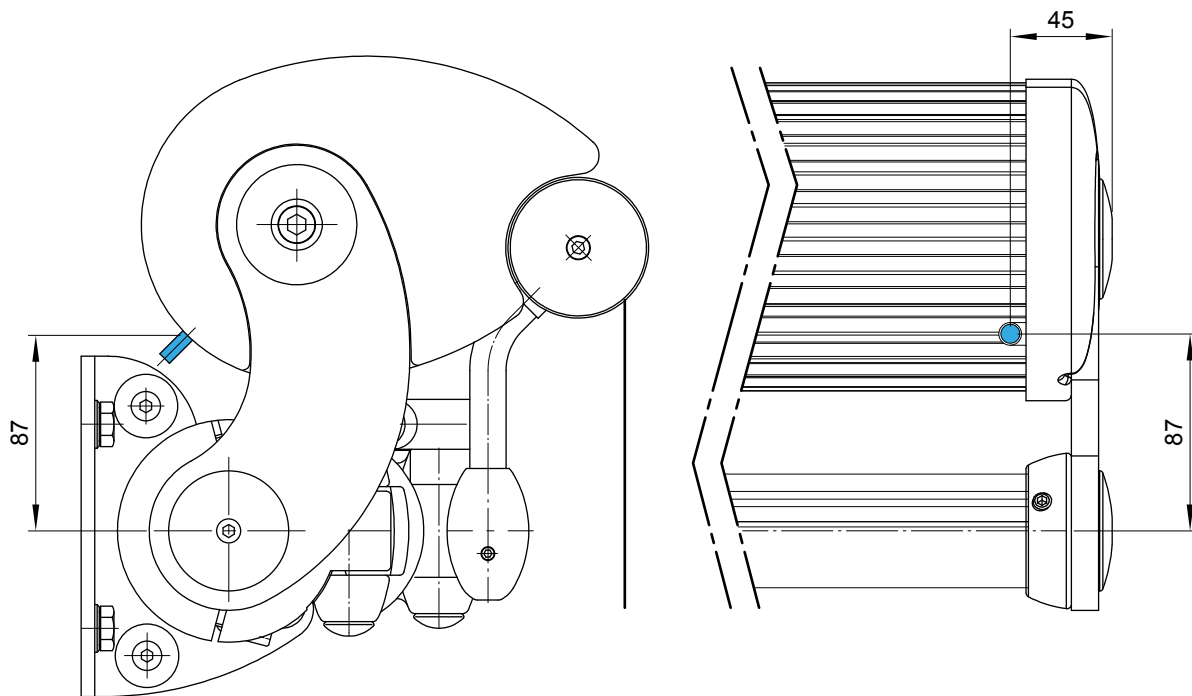
15

16

17



Motor cable exit point



dimensions in mm