

An awning family **with the best standing.**

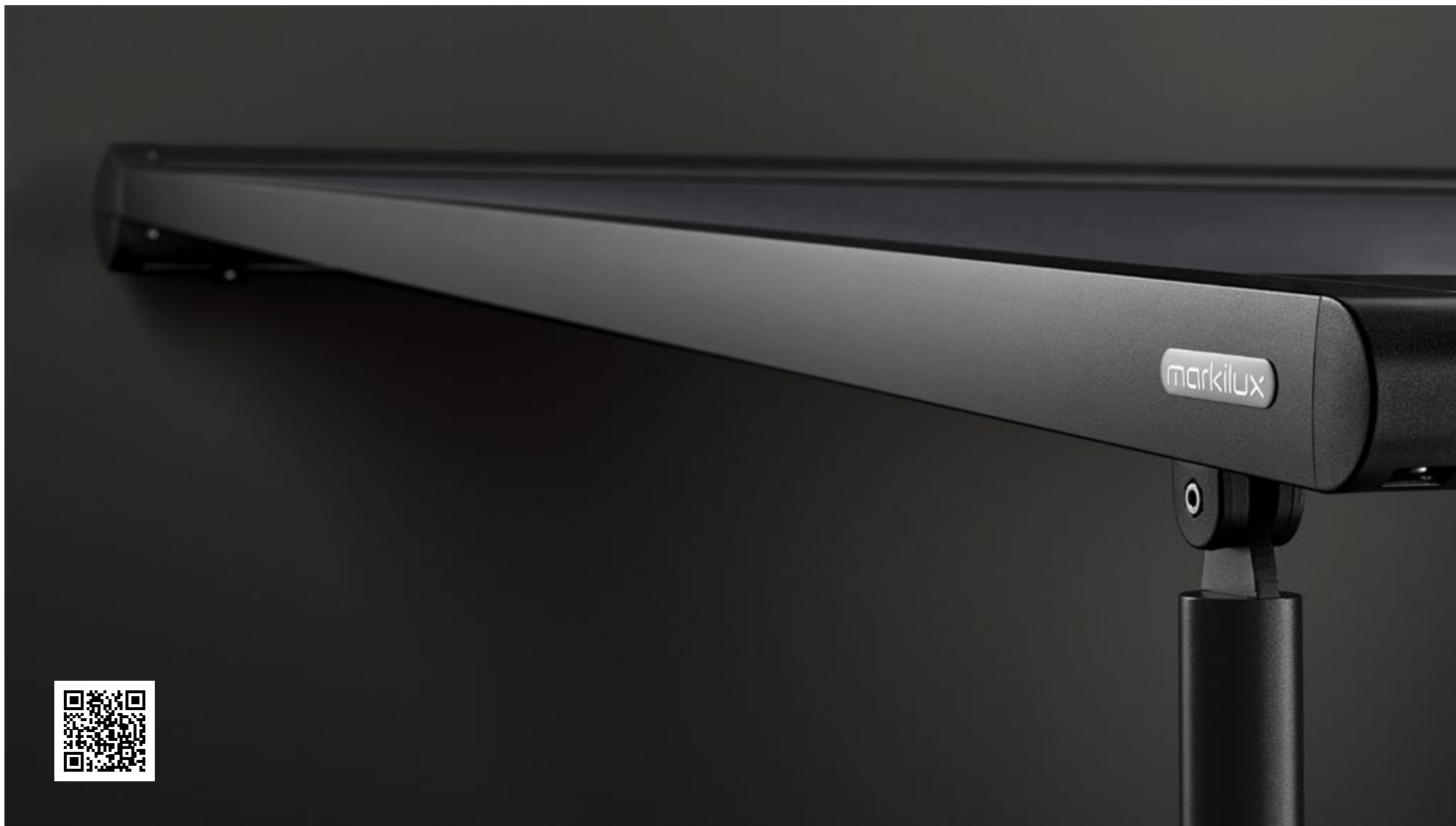
Pergola awnings and awning systems for patio and balcony

0800 953 0199


www.aqblinds.co.uk

markilux

The best under the sun



The full details
can be found at [markilux.com](https://www.markilux.com)



The sun smiles down on an awning. Life smiles on you under a markilux.

Outdoor living

Hours of relaxation and recuperation or valuable time well spent with your family and friends – these are the precious moments in which you cherish your outdoor lifestyle. Designer awnings from markilux not only provide shade, they open up new opportunities for enjoying life. They provide protection on hot days and make for a cosy ambience long after the sun has set. In choosing a markilux designer awning, you are opting for the very best quality “Made in Germany” – and for endless hours of light-hearted fun outdoors.

markilux designer awnings have received a multitude of awards:



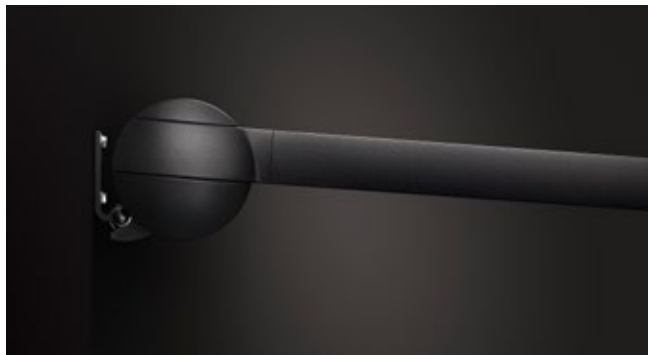
| Brand

| e.g. markilux pergola stretch

Reduced to the essence: Free. Time.

Premium quality made in Germany.

For over 50 years, markilux has been developing and manufacturing top-quality solar protection solutions. markilux designer awnings are characterised by their first-rate, multi-award-winning design and innovative technology. The production of awning and cover under one roof is the essence of what markilux “Made in Germany” represents, with the aim of making an al fresco lifestyle comfortable, convenient and enjoyable. With markilux, you can turn your favourite spot outdoors into something extra special. **The best under the sun. Create the most alluring shade in the world.**



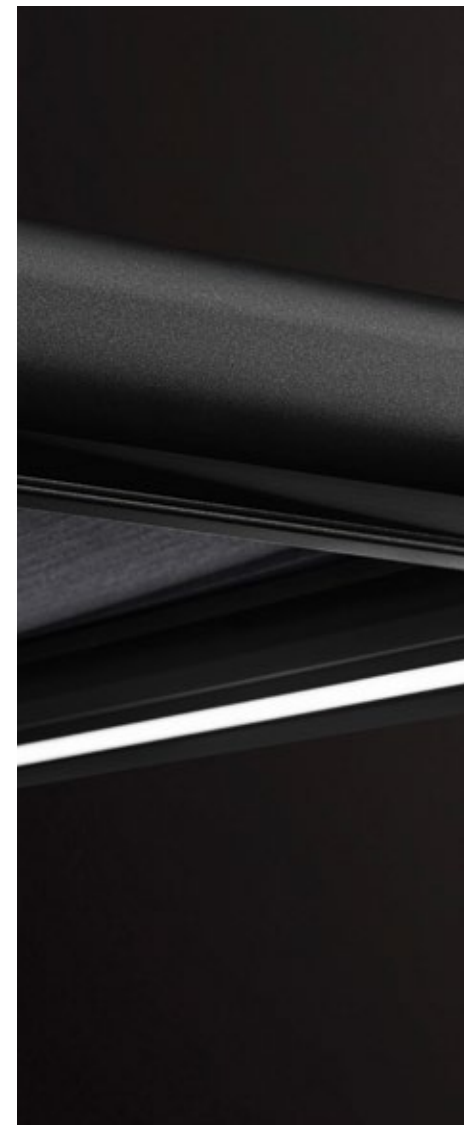
markilux quality

The best possible materials and a comprehensive quality management system ensure that every markilux designer awning has a long service life. As a company, markilux is certified in accordance with EN ISO 9001 standards.



markilux functionality

markilux combines innovative technologies and smart solutions to create high-end products. A multitude of accessories and operating options make it possible to individualise your markilux designer awning in line with your own personal wishes.



markilux

markilux service

The combination of a brand product with competent advice and professional installation on site makes your solution perfect. Qualified markilux specialist dealers offer a comprehensive service and personal contacts in your vicinity.

Member of  **Rat für Formgebung**
German Design Council



markilux design

It is the perfect combination of form and function that turns an awning into a markilux designer awning. In this respect, markilux relies on its long-standing experience in R&D and design.

Fantastic ambience. An overview.



MX_ pergola stretch

Page 10



MX_ pergola style

Page 12



MX_ pergola classic

Page 16



MX_ pergola cubic

Page 18

markilux Pergola Awnings

Large-format sun and weather protection resistant to wind.
The cover is extended via lateral guide tracks.



MX_ pergola compact

Page 20



MX_markant

Page 26



MX_syncra

Page 28



MX_format

Page 34



MX_planet

Page 30



MX_790

Page 36

markilux Awning Systems

Frame systems with awnings to your own exact specifications. Free-standing in the garden or attached to a building, which for structural reasons does not permit the installation of an awning.

markilux Wind and Privacy Protection

Lateral protection by markilux against the sun, light wind and prying eyes.

A family with the best standing.
Pergola DNA inside.



Outdoor areas become favourite spots to relax.
Find your solar protection solution at markilux.com

markilux



Pergola awnings



Slender appearance

Design reduced to the essence.
The cover safely tucked away.



Well thought through

Water drainage from the cover via the integral gutter and support posts is assured from a very low pitch of only 5°.



Attractive protection majestically full of fresh air

A waterproof awning cover leaves you perfectly prepared for a comfortable and relaxed season – al fresco. Allow your markilux specialist dealer to give you professional advice.



Many. Fold. Superbly in shape.

markilux pergola stretch

The markilux pergola stretch offers an impressive take on sun and wet weather protection. The cover is perfectly integrated into the minimalistic, high value awning system. The rhythmical, space-saving cover folding technology makes it possible to shade large areas and creates a special and impressive atmosphere. The abundance of optional extras means that the markilux pergola stretch can show itself from its most attractive side.



Pergola awning
max. 700 × 700 cm

Options

LED Line in guide tracks,
LED Line or LED Spots with an
infrared heater attached to the crossbar,
vertical cassette roller blinds,
lateral wind and privacy protection,
coupled unit



Truly immense and with impressive prospects

Versatile implementation in varying weather conditions. The LED lighting, heaters and lateral protection options allow the atmosphere to be adapted as the situation requires.

Pergola awning

maximum 600 × 500 cm

maximum 500 × 600 cm

Options

coloured lighting,

LED Line in guide tracks,

LED Line in cassette,

LED Line in posts,

LED Line/LED Uplights

in footplate covers,

shadeplus,

lateral wind and privacy

protection,

telescopic posts,

ballast boxes,

coupled unit



Big in shade solar protection for those big moments in life

Would you like to shade wide patios perfectly in a stylish manner? Several pergola awnings coupled together provide plenty of protection and enjoyment whatever the occasion.

Minimalism in mind. Simply big in shade.

Heart-warming. Cool.

The pergola awning for lovers of clean lines and straightforward elegance with plenty of convenience. The resolutely angular design of the pergola style is in very clear focus, lending, as it does, this solar protection system a sense of modern lightness. The purist design presents itself in its best light in the evening. The perfectly integrated LED lighting transforms the patio area into the individual lighting mood you desire. Resolute, heart-warming, cool – by day and night: the markilux pergola style.



markilux shadeplus

This vertical solar shading is perfectly integrated into the front profile and can be retracted and extended manually or via solar power by remote control or app as required.



Awning cover beautifully protected

The slim-line full cassette with a minimalistic design, 205 x 160 mm, offers maximum protection for the awning cover.

mx_pergola style Lighting options



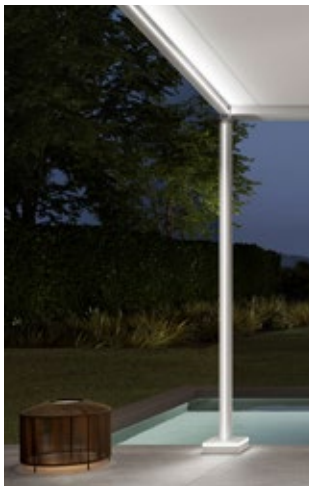
“Cool evening ambience” for an unforgettable al fresco experience.



“Welcome to Miami” and we’re ready for the next party.



“Caribbean feeling” for that short holiday on the patio.



Outdoor living 24/7

Cool for hot nights

The new markilux pergola style is a feast for the eyes even in daylight. But, when illuminated, the pergola is transformed into a truly brightly lit entity, underlining its purist design and bathing the patio in your very own feel-good atmosphere. Each lighting scenario can be configured easily and individually with the app. But beware! You may find that your evenings end up lasting a little longer than you had intended. markilux pergola style: outdoor living 24/7.



Magical worlds full of atmosphere
Outdoor living in a new light. And colour.
Explore your options now at [markilux.com](https://www.markilux.com)

Smart LED lighting options

Configure the LED Line in the cassette and in the guide tracks, in the posts and their footplate covers as well as LED Uplights in the footplate covers individually and simply control them via the app. Lighting options in the support post area are only available with rigid post design.

Pergola awning

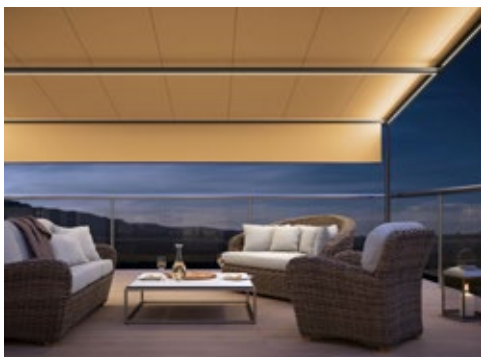
maximum 600 × 450 cm

maximum 500 × 600 cm



Options

LED Line on guide tracks,
LED Line or LED Spots
on the cover support tube,
shadeplus,
lateral wind and privacy protection,
posts round / angular,
telescopic posts,
cover support tube,
ballast boxes,
coupled unit



You have the choice

Discover the range of options under “Options”
at the end of the section and in your markilux
specialist dealer’s showroom.



markilux shadeplus

The additional vertical blind integrated in the front profile simply
blocks out low-lying sun and the glances of inquisitive neighbours.

Coupled pergola awnings

For all those who want even more shade: up to five single
pergola awnings can be joined side by side.

For all those, who have grandiose plans even if it is windy and wet.

markilux pergola classic

When it comes to solar and weather protection, the markilux pergola classic is a great choice. The pergola awning on slender posts and with lateral guide tracks provides generous shading with an extension of up to 6 metres. At the same time, the round markilux pergola classic defies wind and weather up to wind force 6 (wind resistance class 3). You have every opportunity to make your favourite outdoor place your very own with markilux shadeplus as well as with a multitude of lighting options and different post shapes. No matter how strong the sun shines or the wind blows, with your markilux pergola classic you can enjoy life outdoors at any time.



Fantastic views even in bad weather

When the pergola awning is retracted, there is no glass roof construction obscuring the sky and the view to the outside remains unobstructed.



Closed full cassette system
The cover disappears completely inside the round cassette, Ø 187 mm, and is ideally protected. The only thing that is more impressive than the look itself is the fact that the technology works perfectly.



markilux tracfix
One of many markilux refinements: the lateral cover guidance system that leaves no gap between the cover and the guide track. Gives an overall better appearance and improves wind stability.

Pergola awning

maximum 600 × 450 cm

maximum 500 × 600 cm

Options

LED Line in the cassette
and on guide tracks,
LED Line or LED Spots
on the cover support tube,
shadeplus,
lateral wind and privacy protection,
posts round / angular,
telescopic posts,
cover support tube,
ballast boxes,
coupled unit



Wonderful, functional and reliable

Regardless of whatever style you prefer – in the personal combination of awning cover and technology you are bound to find precisely the markilux pergola cubic that fulfils your requirements perfectly.

Essentially square. Practically superb.

markilux pergola cubic

The design of the new markilux pergola cubic was developed entirely in the spirit of the Dessau Bauhaus philosophy. Functional, clear and timeless contouring on the basis of cubist simplification. In addition to the proven solar protection benefits offered by the pergola, this model integrates itself harmoniously and impressively into today's modern architecture and makes a big impression – not only with its high-quality workmanship.



Reduced design language
The angular cassette, 200 × 160 mm, offers room for large-scale solar protection up to 600 × 450 cm or 500 × 600 cm, and as a coupled unit a whole lot more.



markilux shadeplus
More shade and protection – even when the sun is low in the sky. Optionally solar driven using markilux sundrive.

The pinnacle of quality and convenience

Extras for more shade, light and warmth – discover all the ways you can personalise your awning in the showroom of your markilux specialist dealer and at [markilux.com](https://www.markilux.com)



markilux shadeplus

Blocks out glare from the sun and prying eyes in an instant.



An "all-round" achievement

The square, compact cassette, 125 × 125 mm, protects the awning cover all round.



reddot design award
winner 2017



Dependable. Anywhere. For anyone.

markilux pergola compact

The pergola compact unites the graceful shape of the classic pergola with state-of-the-art product design and sophisticated technology. The compact, space-saving awning system on slender support posts is ideal for smaller patios. The lateral guide tracks with markilux tracfix always keep the cover taut. The markilux pergola compact invites you to lounge and take it easy. Attractive and functional solar protection. Anywhere. For anyone.



Pergola awning
max. 450 × 400 cm

Options

LED Line in the cassette and on the guide tracks, LED Line or LED Spots on the cover support tube, shadeplus (manual), lateral wind and privacy protection, posts round / angular, telescopic posts, cover support tube, ballast boxes

Always in the best light

Highlights with LED Line in the cassette, on the guide tracks and/or in the cover support tube guarantee endless hours of pleasure outdoors – even long after the sun has set.



LED Line

Light for reading or socialising, optionally on the guide tracks and/or in the lighting bar, dimmable. For pergola style/cubic/compact also available in the cassette.

Telescopic post

For better water drainage, the posts can be lowered between 20 and 40 cm. On request with a motor. Cannot be combined with lighting in the posts and footplate covers in the pergola style.

markilux sundrive

An integrated solar module can drive the shadeplus motor. When the awning is extended, the front profile and the guide tracks finish perfectly flush with one another.



LED Spots attached to the light bar

The spotlights provide perfect contrast lighting in the evening hours. And they can be pivoted and dimmed, of course!

Ballast boxes

Give your markilux pergola reliable stability when securing the front posts in the foundations is not possible or desired.

Stainless steel crank

Bring the adjustable posts to the desired height in no time at all.

Lateral wind protection and extra privacy

For protection from wind, weather and prying eyes, markilux offers you versatile textile solutions. We would be happy to advise you!



markilux shadeplus

The vertical protection against sun and prying eyes – up to 230 cm in height – creates a private room outdoors with its own special ambience.

For every requirement
the right solution.
With high-grade products.



Up to any challenge:
markilux.com

markilux



Awning systems

Awning system

maximum post separation up to 600 × 600 cm
with two independently functioning awnings,
as a 1-field unit up to 300 × 600 cm,
overall height 260 cm,
special dimensions possible

Options

LED Line in the frame and under the guttering,
LED Spots with infrared heater under the guttering,
vertical cassette roller blinds,
lateral wind and privacy protection,
as well as a range of convenience and design options



Versatile in both form and function

As a stand-alone unit or integrated into the existing architecture, the markilux markant is compelling and makes a big impression in any situation.



Your very own personal space in the open air

With vertical cassette blinds, and protection against the wind and prying eyes on the markilux markant, you can create your own cosy space outdoors. You will find detailed information in your local markilux specialist dealer's showroom or at [markilux.com](https://www.markilux.com)



Make the rain take a detour.

markilux markant

Plan the use of the markilux markant free-standing awning roof system to meet your own personal solar protection requirements. The awning, integrated into the frame, lends the system a textile character, its fabrics making it possible to create the pleasant colour ambience you have in mind. The markilux markant offers protection, security, freedom, an outstanding appearance and comfort in a purist design.



On request – that little bit more.

Whether in combination with heaters or creating atmospheric lighting with LED Line or LED Spots: the markilux markant ticks every box in creating a feel-good space in the open air.

Awning system

depending on the awning model up to 60 m²,
as a coupled unit even larger areas are possible

Arm technology

depends on the awning model

Options

depends on the awning model
LED lighting and shadeplus,
uno (only one awning/ pergola),
flex (with ballast boxes),
posts round or square,
foot plate covers,
coupled system



markilux syncra flex

The ballast boxes allow installation without
concrete foundations on site.



Detailed information is available from your markilux specialist dealer

Whether buildings that cannot have awnings attached for structural reasons, or open-air seating areas – the markilux syncra stands for perfect, large-format solar protection.



markilux syncra uno

Two feet. One awning. No problem!
The markilux syncra uno proves itself a stable base even with just one “wing”.



markilux syncra pergola

With the additional posts at the front and the tracfix lateral cover guidance system, this option offers particular advantages in terms of size and wind stability.

This will stand on its own two feet for you.

markilux syncra

Generous shading right where you need it. That is the promise made by the markilux syncra. And one it keeps. As a single unit, it will shade up to 60 m²; as a coupled awning even larger areas are no problem.

This free-standing awning stand system literally stands on its own two feet: two round or square posts and a massive cross-beam ensure reliable stability. Depending on the requirements, one or two folding arm awnings or markilux pergolas can be attached to it. This awning system is either firmly anchored to the ground (“fix”) or installed using ballast boxes (“flex”).

No matter which variant you choose, you can always count on the markilux syncra.

Awning system

depends on the awning model
maximum 600/610 × 300 cm
maximum 500/510 × 350 cm

Arm technology

depends on the awning model

Options

depends on the awning model
LED lighting and shadeplus,
flex can be rotated by up to 335°,
foot plate cover



flex option

The markilux planet flex can be rotated and positioned wherever you need shading – by up to 335° with the Easy-Go lever.



An awning-cum-parasol with designer awning of your choice

Your markilux specialist dealers know exactly what they are doing. Allow yourself to be inspired by the broad range of options, your local sun specialist will take care of everything else.

Always revolving around your requirements.

markilux planet

The markilux planet is a parasol and awning in one. It's an eye-catcher that provides perfect shading for your room outdoors. This awning-cum-parasol protects you from solar radiation with exceptional reliability; it is extremely sturdy, yet versatile in its deployment. With the Easy-Go lever in the flex variant, you can simply rotate it by up to 335° – so you can have shade wherever it is required. The slim post carries the selected markilux designer awning with ease and the combination of functionality and design is impressive. The markilux planet is further proof that everything revolves around your requirements at markilux.



markilux shadeplus

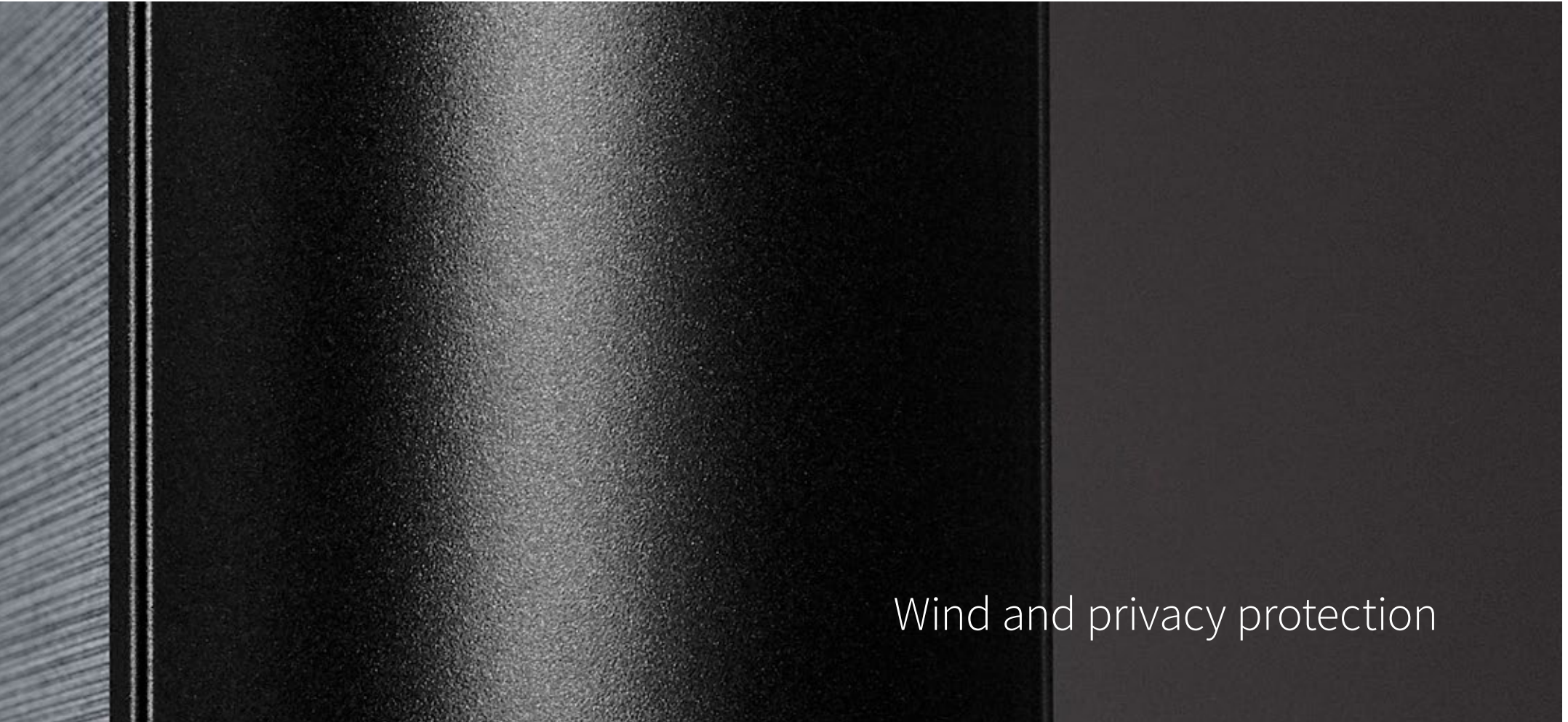
This versatile protection against low-lying sun, inquisitive glances and glare integrated into the front profile allows you to enjoy the late afternoon sun without having to worry about prying eyes.



A side thought.



The nicer sides of life
can be found at markilux.com



Wind and privacy protection



Modular. Convertible. Wonderful.

Whether used as a free-standing room partition indoors or as a fixed feature outdoors, whether individually or grouped together – the markilux format is much more than just a blind.

It is an appeal to sociability – in textile form.



markilux format lift

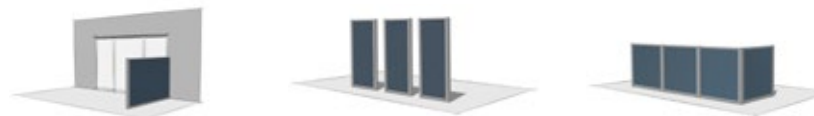
Vertically extending aluminium frame with textile fabric covering or transparent full foil window.



Framed in. No limits. Versatile.

The markilux clamp system keeps the cover under tension.

Basic frame sections can be added in modular fashion.



Life has a lot of nice sides to it. And now your home does, too.

markilux format

Put up partitions to shield yourself from prying eyes – or create your own personal space in the open air with its own textile cosiness. markilux format puts a world of possibilities at your fingertips – with more than 200 fabric patterns to choose from.



Wind protection and extra privacy

individual unit max. 300 × 250 cm,
can be extended as needed,
slide, sliding sections, max. 600 × 250 cm,
lift, extending frame, max. 250 × 190 cm

Options

triangular solutions
for markilux awning systems,
slide, lift,
panoramic window



Integrated into an awning system

Vertical protection, perfectly tailored to markilux awning systems, on request possible as slide or lift version with movable sections and panoramic window.

The elegant way to show your neighbours where privacy begins.

markilux 790

There are few seating areas outdoors that are protected on all sides from sun, wind and prying eyes. Therefore, this slim markilux side screen simply makes your life on the balcony or patio more comfortable and enticing. It can be extended in one smooth movement and is always by your side when you need it and feel like making use of its benefits.

Side screen awning

Extension: max. 450 cm

Height: 90 – 250 cm

Options

sloping top edge to the cover,

mobifix (up to a height of 213 cm),

numerous fixture options



Sloping top edge

The cover is available with a sloping top edge which can be cut to match the pitch of your markilux awning. It creates a beautiful, enclosed and protected area free from prying eyes and the glare of the sun.



mx_790




markilux mobilfix

The movable support post with granite base plate stands secure, wherever you want it to.



A broad range of fixture options

markilux offers you a suitable fixture option for virtually every installation situation.



A clear overview.
Opening up
exciting prospects.

markilux



Reference installations



**Bootshaus KUL Gastro GmbH
Mannheim | DE**

The restaurant terrace: a highlight whatever the weather. With the pergola stretch, the spacious terrace with a view of the river Neckar invites you to linger and celebrate.





Hamburg | DE
Enjoy the most alluring shade in
the world in all its diversity.





Weingut Strauss
Gamlitz | AT
Welcoming. Inviting. Free.
More feel-good experience.
More customers.
More turnover.





Bad Zell | AT
Best prospects for next summer:
a shady place beside a sunny pool.



Graz | AT
Stylish shading. Perfectly configured to suit both
the architecture and the customer's requirements.

markilux



Sulz am Neckar | DE

A place to live life to the full.
For enjoying. For chatting.
For relaxing.





Hotel Löwen Schruns GmbH
Schruns | AT
Beauty lies not in size,
but in attention to detail.



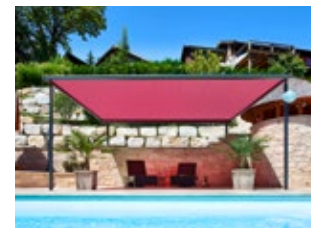


Ron Blaauws Gastro Bar
Amsterdam | NL

The outside redefined: an al fresco dining landscape with a lot of turnover potential.



Schäftlarn | DE
Good prospects:
garnering more space
in a prime location.



markilux



Het Badpaviljoen Domburg | NL
The sun smiles down on an awning.
Life smiles on you under a markilux.



Waddinxveen | NL
Relaxation as far as
the eye can see.





Wals bei Salzburg | AT
markilux planet: parasol and
awning in one. That holiday feeling.
Every day.





Berggasthof Mitterberg

Zell am See | AT

More space and sunny prospects, too:
both for your guests – and your turnover.





Küstenperle
Büsum | DE
Large-area shading with
eye-catching advertising
motifs on the covers.

markilux



Wals bei Salzburg | AT
Time to be outdoors.
All year round.



Biel-Benken | CH
markilux markant: your very own
personal space in the open air for
relaxed outdoor living.





Brokenwood Wines, Pokolbin | AUS
The new dimension of hospitality.
Turns visitors into regulars.



LandHotel Kolb
Haus im Ennstal | AT
The markilux syncra with
four pergola awnings blends
in perfectly with the natural
environment.






Lilienberg Entrepreneurial Forum, Ermatingen | CH
The elegant markilux syncra as a coupled unit offers plenty of space for a large number of guests.

Willich | DE

The safe alternative if you are cooped up at home: enjoy a stylish atmosphere every day in your own garden.





Beauty lies not in size,
but in attention to detail.

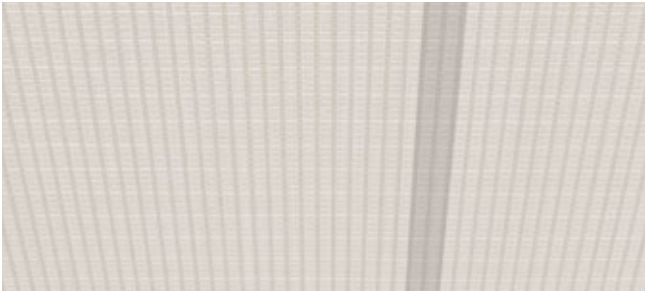


Awning cover fabrics, colours,
operation and technical specifications



Self-cleaning effect

Water droplets pick up dirt particles and run off the awning cover taking dirt with them (the awning must be set at a pitch of at least 14°), ensuring you can enjoy your beautiful fabric for a long time to come.



Bonded awning covers

Panel joints bonded together ultrasonically ensure a consistent, unobtrusive appearance. Their excellent resistance to water, light and fluctuations in temperature ensures that the service life of the cover is extended substantially.



Light and weather resistance and resistance to fading

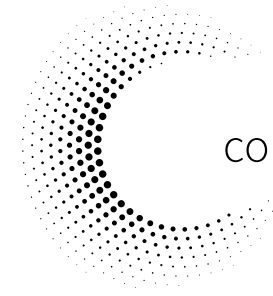
High-tech yarns dyed right to the core and the high-grade snr finish developed in house guarantee the most stunning shade in which to relax.



**STANDARD
100**

A96-0071
Hohenstein HTTI

Detailed information about the typical properties of awning fabrics is available from your markilux specialist dealer and in the current markilux awning fabric brochure.



collection one



The most beautiful fabric between heaven and earth.

Our unique covers help to create a special ambience

The colour and quality of the awning fabric are what help make the ambience on your patio something special. Colour nuances, patterns and textures succeed in creating that uniquely special effect by virtue of their brightness and hue. As a leading manufacturer of high-grade awning fabrics with 50 years of experience in the manufacture of textiles, markilux offers an unparalleled variety. The markilux textile design team is constantly developing new patterns in line with the latest trends, which are nevertheless characterised by their timeless appeal. Among the more than 200 patterns in thematically coordinated colour families, you are bound to find your very own and most beautiful fabric between heaven and earth.



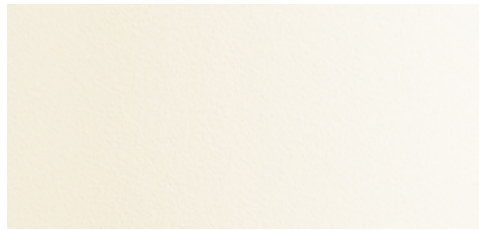
markilux collection one – One collection, endless ideas.

Choose your own favourite pattern from a number of different colour families. When making your selection allow yourself to be inspired, enthused and advised by a markilux specialist dealer near you ...



Traffic white

RAL 9016



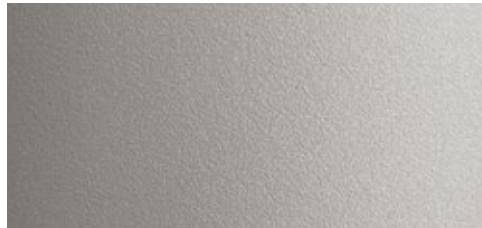
Off-white textured finish

5233



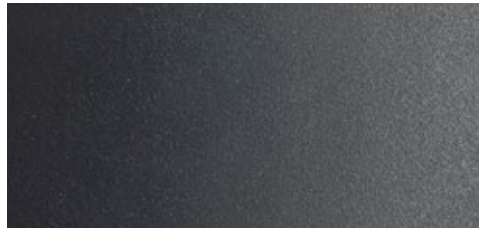
Metallic aluminium

RAL 9006



Stone grey metallic

5215



Anthracite metallic

5204



Grey brown

similar to RAL 8019



Havana brown textured finish

5229



RAL colour of your own choice

© RAL Bonn 2024





Sounds perfect. Tone in tone.

markilux awning colours

The awning frame colour complements and enhances the colour of the fabric and creates a perfect link to the architectural surroundings. From a variety of shades of white through to the timelessly elegant anthracite, a broad range of colours is available to you. And if you want to create your own particular colour scheme? No problem! We will gladly manufacture your dream awning in your own personal shade.

Our high-grade powder coating finish is guaranteed for any awning colour you choose.

Matching every architectural style and customer demand.

All markilux awning colours are available without a surcharge.

We would be happy to produce non-standard RAL colours on request.

Make it easy on yourself. And comfortable.

markilux ease of operation

Fulfils the highest expectations and can be used in any weather conditions. The choice is yours: manual operation (optionally spring assisted), switch-operated or remote, radio-controlled motors are all possible on most models. And if you wish, light, wind and rain sensors will control your markilux designer awning according to the prevailing weather conditions. Alternatively, you simply operate it at home yourself and this can even be done when you're out and about via your smartphone or tablet.

Your markilux specialist dealer will advise you on any questions you may have with regard to operating markilux awnings in comfort and will gladly explain to you why awning motors fitted with silentec technology are deafeningly quiet.

Availability depends on the model

Hard-wired motor / Radio-controlled motor



markilux remote control

Comfort can be so easy. Awning, shadeplus, light and warmth at the touch of a button.

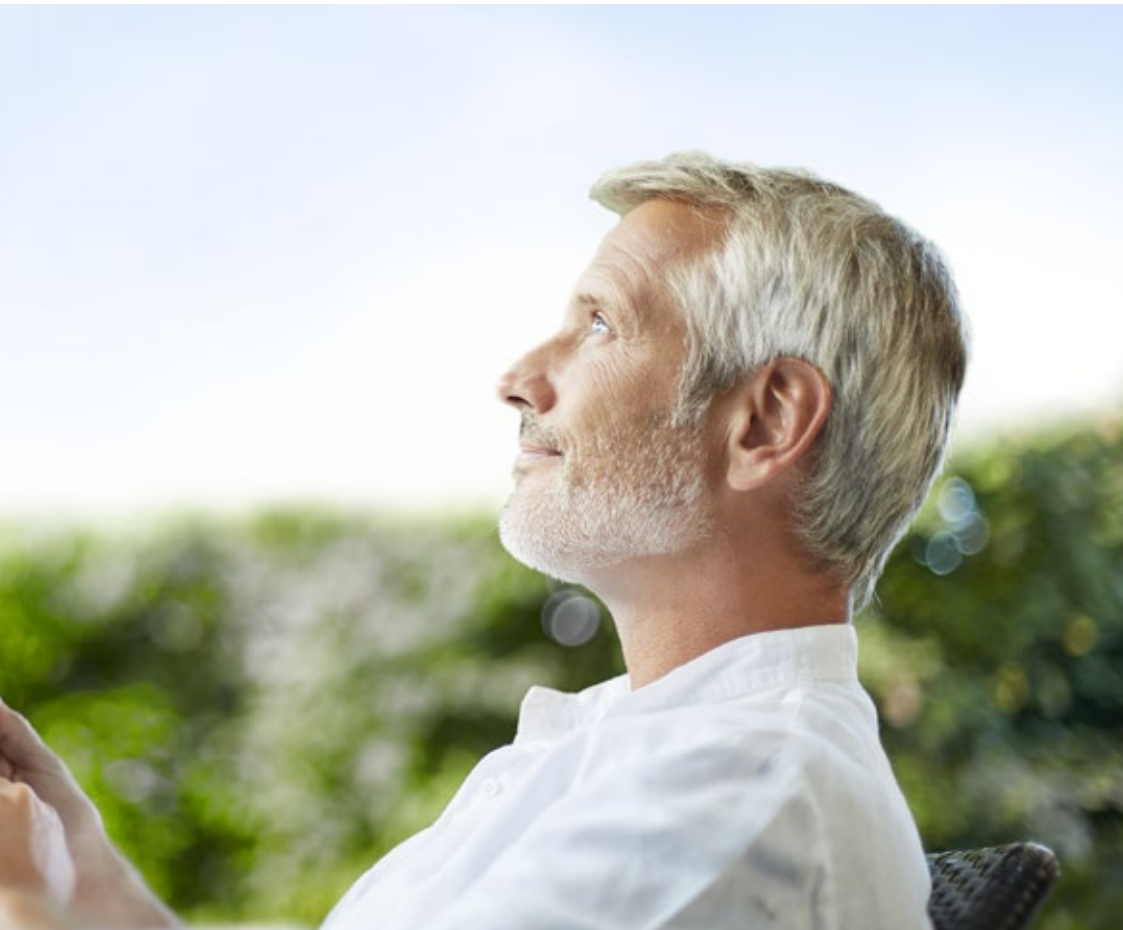


silentec motor

Deafeningly quiet. Considerably reduces the noise the motor makes when extending and retracting the awning.



Smart home



Smart control via App/Home automation

Arrange your own personal patio atmosphere by controlling the awning, the lighting, heating and in comfort using io technology in conjunction with your smartphone or tablet – whether you are relaxing on your patio or away from home.

Automatic weather controls



Light sensor

Intelligent control of your blind or awning according to the intensity of the sun's rays. Battery operated, so there is no need for a mains power supply.



Rain sensor

The awning retracts automatically in the case of precipitation. This intelligent control mechanism protects the cover on your awning.



markilux vibrabox

Intelligent, sensitive and independent of the mains. Inertia sensor which reacts to the level of vibration caused by the wind and prompts a motor-driven awning to retract if the predetermined wind speed is exceeded.



Light and wind sensor

According to the prevailing weather conditions, this intelligent control system will extend and retract your awning automatically.

markilux Pergola Awnings

markilux pergola stretch

Page 10



markilux pergola style

Page 12



markilux pergola classic

Page 16



markilux pergola cubic

Page 18



markilux pergola compact

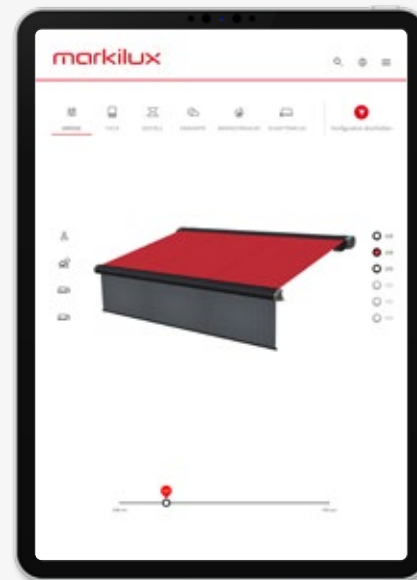
Page 20



Max. width × extension	700 × 700 cm	600 × 500 cm	600 × 450 cm	600 × 450 cm	450 × 400 cm
optional		500 × 600 cm	500 × 600 cm	500 × 600 cm	
Cassette	163 × 125 mm	205 × 160 mm	Ø 187 mm	200 × 160 mm	125 × 125 mm
	cover folds away with track-guided supporting profiles	tracfix cover guidance with lateral guide tracks supported by slim posts	tracfix cover guidance with lateral guide tracks supported by slim posts	tracfix cover guidance with lateral guide tracks supported by slim posts	tracfix cover guidance with lateral guide tracks supported by slim posts
Operation	radio-controlled motor	radio-controlled motor	hard-wired motor	hard-wired motor	hard-wired motor
optional	<ul style="list-style-type: none"> ➤ smart home 	<ul style="list-style-type: none"> ➤ hard-wired motor ➤ smart home 	<ul style="list-style-type: none"> ➤ silentec motor ➤ radio-controlled motor ➤ smart home 	<ul style="list-style-type: none"> ➤ silentec motor ➤ radio-controlled motor ➤ smart home 	<ul style="list-style-type: none"> ➤ radio-controlled motor ➤ smart home
Fixture type	face / top / eaves	face / top / eaves	face / top / eaves	face / top / eaves	face / top / eaves
optional	<ul style="list-style-type: none"> ➤ incl. wall sealing profile and system coverboard 	<ul style="list-style-type: none"> ➤ wall sealing profile 	<ul style="list-style-type: none"> ➤ wall sealing profile 	<ul style="list-style-type: none"> ➤ wall sealing profile 	<ul style="list-style-type: none"> ➤ wall sealing profile
Options	<ul style="list-style-type: none"> ➤ LED lighting in the lighting bars and / or cross beams ➤ vertical roller blinds ➤ wind protection / extra privacy ➤ cross-beam ➤ coupled awning 	<ul style="list-style-type: none"> ➤ coloured lighting ➤ LED lighting in the cassette, guide tracks, posts and / or footplate covers ➤ shadeplus ➤ wind protection / extra privacy ➤ telescopic posts ➤ ballast boxes ➤ coupled awning 	<ul style="list-style-type: none"> ➤ LED lighting in the guide tracks and / or cover support tube ➤ shadeplus ➤ wind protection / extra privacy ➤ round / square posts ➤ telescopic posts ➤ cover support tube ➤ ballast boxes ➤ coupled awning 	<ul style="list-style-type: none"> ➤ LED lighting in the cassette, guide tracks and / or cover support tube ➤ shadeplus ➤ wind protection / extra privacy ➤ round / square posts ➤ telescopic posts ➤ cover support tube ➤ ballast boxes ➤ coupled awning 	<ul style="list-style-type: none"> ➤ LED lighting in the cassette, guide tracks and / or cover support tube ➤ shadeplus / drop valance (manual) ➤ wind protection / extra privacy ➤ round / square posts ➤ telescopic posts ➤ cover support tube ➤ ballast boxes



markilux Awning Configurator



Create the most alluring shade in the world

Configure your markilux designer awning including cover and optional accessories at markilux.com or visualise your dream awning live on the wall of your own home using the free markilux AR App. Your markilux specialist dealer will advise you personally on site, will draw up an offer tailored to your requirements and install the product professionally.



The awning configurator
at markilux.com



markilux 3D App
Free in your App Store

Allow yourself to be inspired, enthused, advised...

Every option can be found in the showroom of a markilux specialist dealer near you or at markilux.com

markilux Awning Systems

markilux markant

Page 26



markilux syncra

Page 28



markilux planet

Page 30



Max. width × extension

600 × 600 cm (2 fields)

up to 60 m²

600 / 610 × 300 cm

optional

300 × 600 cm (1 field)

depends on the awning model

500 / 510 × 350 cm

Cassette

Textile weather protection

Awning frame system

Awning-cum-parasol

on support posts with integrated designer awning

with two posts and one or two folding-arm or pergola designer awnings of your choice

with folding-arm designer awning of your choice

Operation

radio-controlled motor

depends on the awning model

depends on the awning model

optional

➤ smart home

Fixture type

free-standing

free-standing

free-standing

on concrete foundations or attached to a wall

on concrete foundations or with ballast boxes

on concrete foundations

Options

- LED lighting in the frame and / or front gutter
- vertical roller blinds
- wind protection / extra privacy

depends on the awning model

- uno
- flex
- LED lighting
- shadeplus
- round / square posts
- base cover
- coupled system

depends on the awning model

- flex (335° pivoting)
- LED lighting
- shadeplus
- base cover

markilux Wind and Privacy Protection

markilux format

Page 34



markilux 790

Page 36



300 × 250 cm

Extension: max. 450 cm

modularly extendable

Height: 90 – 250 cm

Wind protection / extra privacy

Side screen

modular basic system, can be flexibly extended and with sliding sections on request

lateral protection against low-lying sun, wind and unwelcome glances

manual operation

manual operation

fixed in position / free-standing

face / reveal

or integrated into an awning system

- triangular solutions
- slide
- lift
- panorama windows

- sloping top edge
- mobilfix
- a broad range of fixture options

markilux



The best under the sun. Create the most alluring shade in the world.

Innovative technology and the pinnacle of quality, have received both acclaim and multiple awards. Made in Germany. Ideas, detailed information, professional advice and all the exquisite markilux awning fabric patterns can be found in your specialist dealer's showroom and at markilux.com



Folding-arm awnings



Pergola awnings



Awning systems



Glass canopy awnings



Vertical roller blinds



Wind and privacy protection



markilux.com

0800 953 0199

www.aqblinds.co.uk

markilux

The best under the sun