



Exterior Awning

## **markilux 8800 / 8800 tracfix**

Modern, timeless design and technology thought through to the very last detail – the extremely reliable shading solution for large areas.

# markilux by Aquarius Blinds



[www.aqblinds.co.uk](http://www.aqblinds.co.uk) - 0800 953 0199

**markilux**  
safe timeless beautiful

01  
02  
03  
04  
05  
06  
07  
08  
09  
10  
11  
12  
13  
14  
15  
16  
17  
18  
19  
20

## Product characteristics

Wind resistance class 3  
Beaufort 6 → 38–48 km/h → 10.5–13.4 m/s → 24–30 mph



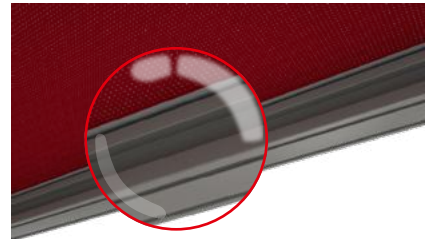
1 bottom fixture



1 face fixture



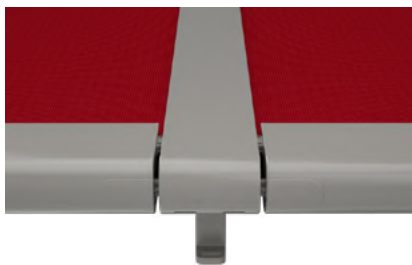
2 tracfix<sup>1)</sup> cover guidance – no gap between cover and guide track



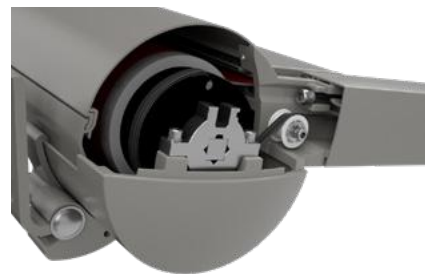
3 front profile finishes flush with the end of the guide tracks



3 coupling track



4 maintenance opening in the cassette



4 awning retracted, all round cover protection



1) optional configuration

## Product characteristics

### Description

- exterior awning for conservatories, glass canopies and large skylights. The ingenious tensioning system and the sturdy design allow areas of up to 36 m<sup>2</sup> to be shaded by one awning (with tracfix system 30 m<sup>2</sup>) – up to 5 awnings can be coupled together.

### Special features

- fully encompassing cassette that protects the cover perfectly
- the awning cover is bonded with stabilising vertical panel joints – in the case of the series sunvas, sunsilk and perla the standard panel width is 60 cm (in perfotex 120 cm, in Soltis 92 88.5 cm and transolair 84 cm) – in order to achieve the optimum overall cover tension and stability
- option tracfix, the continuous lateral cover guidance system that leaves no gap between the cover and guide tracks – gives improved wind stability and a cleaner appearance
- option of a silentec motor – motor noise is appreciably reduced
- tried and tested tensioning system with drive belts and integrated gas pistons – delivers optimum cover tension in any phase of extension
- the broad range of brackets with patented clip-on system offers individual fixture solutions
- can be combined perfectly with the awning system markilux construct

### Dimensions

- single unit: 60–700 cm in width, maximum extension 700 cm (depending on the width)
- maximum dimensions, width × extension: 500 cm × 700 cm / 550 cm × 650 cm / 600 cm × 600 cm / 650 cm × 500 cm / 700 cm × 450 cm (without tracfix system)
- maximum dimensions, width × extension: 500 cm × 600 cm / 550 cm × 500 cm / 600 cm × 450 cm (with tracfix system)
- intermediate sizes are available

### Roller tube and lateral bearings

- round roller tube Ø 95 mm with keyway, galvanised steel – excellent stability, ensures near perfect cover performance even at the largest widths
- the roller tube bearing is made of die-cast aluminium

### Awning profiles

- extruded aluminium, in façade quality, powder coated
- cassette profile in two pieces, round, Ø 187 mm
- guide tracks angular, width × height 60 mm × 70 mm (coupled unit 116 mm × 70 mm)
- front profile rounded at the front, height × depth 70 mm × 150 mm

### Side caps

- the cassette end caps with opening for guide tracks are made of die-cast aluminium, powder coated
- the top maintenance cover is made of high-quality plastic, powder coated
- the front profile end caps are made of high-quality plastic, powder coated

### Fixture brackets

- extruded aluminium, powder coated
- cassette brackets: bottom fixture, face fixture, top fixture
- brackets for the guide tracks: stand-off brackets for bottom fixture, lateral fixture, reveal fixture
- standard bracket heights: 100 mm / 140 mm / 100–500 mm (bespoke heights can be ordered)
- track-only fixture of the awning is possible up to a fixture width of 600 cm without any housing support
- other accessories are available

01  
02  
03  
04  
05  
06  
07  
08  
09  
10  
11  
12  
13  
**14**  
15  
16  
17  
18  
19  
20

## Frame colours

markilux frame colours without surcharge

traffic white RAL 9016



metallic aluminium RAL 9006



grey brown, similar to RAL 8019



off-white textured finish, 5233 <sup>1)</sup>



stone grey metallic, 5215 <sup>1)</sup>



anthracite metallic, 5204 <sup>1)</sup>



Havana brown textured finish, 5229 <sup>1)</sup>



### Non-standard powder-coated finish

Bespoke frame colours at a surcharge – matt, metallic and pearl finishes as well as other colour ranges (DB, Tiger etc.) on request. All frame colours are available at a surcharge with enhanced corrosion protection.

<sup>1)</sup> textured finish

Colours may differ slightly from those depicted in both hue and finish.

# Dimensions and configuration options

Single unit

		Awning fixture width											Minimum fixture width		
		150	200	250	300	350	400	450	500	550	600	650 <sup>1)</sup>			700 <sup>1)</sup>
Order dimensions		60	151	201	251	301	351	401	451	501	551	601	651	Hard-wired motor	Radio-controlled motor
		150	200	250	300	350	400	450	500	550	600	650	700		
H	150													60 [73]	70 [83]
	200														
	250														
	300														
	350														
	400 <sup>2)</sup>	•	•	•	•	•	•	•	•	•	•	•	•		
	450 <sup>2)</sup>	•	•	•	•	•	•	•	•	•	••	••	••		
	500 <sup>2)</sup>	•	•	•	•	•	•	•	•	••	••	••	—		
	550 <sup>2)</sup>	•	•	•	•	•	•	•	••	••	••	—	—		
	600 <sup>2)</sup>	•	•	•	•	•	•	••	••	••	••	—	—		
	650 <sup>2)</sup>	•	•	•	•	•	••	••	••	••	—	—	—		
700 <sup>2)</sup>	••	••	••	••	••	••	••	••	—	—	—	—			

dimensions in cm

1) = depending on the fixture combination, an additional central cassette support is required from a fixture width of 601 cm, and a central support for any cover support tube from a fixture width of 451 cm.

2) = from an extension of 401 cm, an additional track bracket per track is required

• = 1 cover support tube, if unit is without tracfix

•• = 2 cover support tubes, if unit is without tracfix

[...] = dimensions in the case of tracfix units

H = extension

	= tracfix (optional)
	= tracfix ist not available

## Operation

	standard	optional
crank handle	—	—
hard-wired motor	✓	—
silentec motor (optionally with an external io / RTS receiver)	—	✓
radio-controlled motor io, 868 MHz	—	✓
radio-controlled motor RTS, 433 MHz	—	✓
radio-controlled motor RTS, 433 MHz with manual override	—	—

## Awning cover

	fabric range no.	standard	optional
sunvas <sup>1)</sup>	301.. / 309..-315..	✓	—
perla <sup>2) 5)</sup>	370 ..	—	✓
sunsilk <sup>1)</sup>	324.. / 325.. / 328.. / 369..	✓	—
perla FR <sup>1) 5)</sup>	374.. / 375..	—	✓
perfortex <sup>2)</sup>	331.. / 332..	✓	—
transolair <sup>3) 6)</sup>	338..	—	✓
transolair (120 cm)	339..	—	✓
vuscreen Alu	317..	—	—
Soltis Perform 92 <sup>4)</sup>	92-20..	—	✓
glass fibre screen	272..	—	—

## Standard panel widths

- 1) 60 cm                      3) 84 cm                      5) only for tracfix units  
 2) 120 cm                    4) 88,5 cm                    6) max. projection 600 cm

## Coupled Awning

2-5 fields, 1 motor per field
alternatively 2 fields, 1 motor / 3 fields, 2 motors / 4 fields, 2 motors
maximum field dimensions: see dimension overview for a single unit

## General information

Different extensions in coupled awnings are available. In different awning widths, the rolling up characteristics of the covers may also be visually different. This affects neither the functionality of the awning nor the service life of the cover.

## Shadeplus / drop valance

not available

## Optional accessories

tracfix – the cover is held in the guide tracks by a zip
storm safety bracket for the cassette
wall sealing profile
more than one motor in coupled units which can be operated independently of one another
automatic controls (light, wind, rain)

**N.B!** Important background information can be found in the chapter "Optional Accessories".

01  
02  
03  
04  
05  
06  
07  
08  
09  
10  
11  
12  
13  
14  
15  
16  
17  
18  
19  
20

# Dimensions and configuration options

Coupled unit 2 fields <sup>4)</sup>

		Awning fixture width									
		500 <sup>3)</sup>	600 <sup>3)</sup>	700 <sup>3)</sup>	800	900	1000	1100	1200	1300	1400
Order dimensions		401	501	601	701	801	901	1001	1101	1201	1301
		500	600	700	800	900	1000	1100	1200	1300	1400
Overall width		+ 10									
H	150										
	200										
	250										
	300										
	350										
	400	.	.	.	.	.	.	.	.	.	.
	450	.	.	.	.	.	.	.	..	..	..
	500	.	.	.	.	.	.	..	..	..	—
	550	.	.	.	.	.	..	..	..	—	—
	600	.	.	.	.	..	..	..	..	—	—
	650	.	.	.	.	..	..	..	—	—	—
700	..	..	..	..	..	..	—	—	—	—	

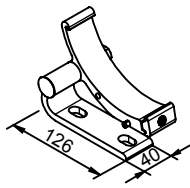
Coupled unit 3 fields <sup>4)</sup>

		Awning fixture width															
		600 <sup>3)</sup>	700 <sup>3)</sup>	800	900	1000	1100	1200	1300	1400	1500	1600	1700	1800	1900	2000	2100
Order dimensions		551	601	701	801	901	1001	1101	1201	1301	1401	1501	1601	1701	1801	1901	2001
		600	700	800	900	1000	1100	1200	1300	1400	1500	1600	1700	1800	1900	2000	2100
Overall width		+ 10															
H	150																
	200																
	250																
	300																
	350														.	.	.
	400	.	.	.	.	.	.	.	.	.	.	.	.	.	.	.	.
	450	.	.	.	.	.	.	.	.	.	.	.	..	..	..	..	..
	500	.	.	.	.	.	.	.	.	.	.	..	..	..	..	.. <sup>2)</sup>	—
	550	.	.	.	.	.	.	.	.	..	..	..	..	..	—	—	—
	600	.	.	.	.	.	.	.	..	..	..	..	..	..	—	—	—
	650	.	.	.	.	.	.	.	..	..	..	..	.. <sup>1)</sup>	—	—	—	—
700	..	..	..	..	..	..	..	..	..	..	—	—	—	—	—	—	

- 1) = maximum fixture width of 1650 cm
  - 2) = maximum fixture width of 1950 cm
  - 3) = the cassette will be supplied in one piece as standard. If, for transportation or installation reasons, the cassette needs to be split, please note this explicitly when ordering.
  - 4) = maximum field dimensions: see dimension overview for a single unit
  - .
  - ..
  - H = *order dimension* = extension
- = tracfix (optional)
  = tracfix not available
- dimensions in cm

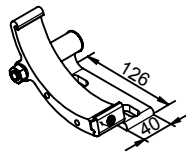
# Fixtures, fittings and accessories

## Bottom fixture brackets, cassette



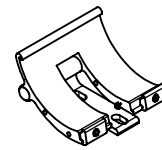
bottom fixture cassette bracket  
left

**76061.**



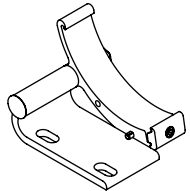
bottom fixture cassette bracket  
right

**76062.**



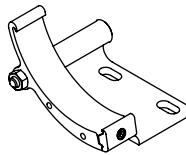
coupling bracket for the cassette bottom fixture

**76180.**



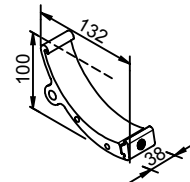
bottom fixture cassette bracket for reveal fixture  
left

**76077.**



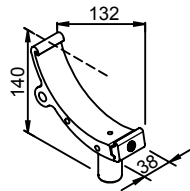
bottom fixture cassette bracket for reveal fixture  
right

**76078.**



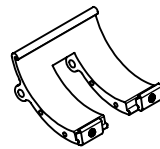
cassette support for track-only fixture  
100 mm

**76183.**



cassette support for track-only fixture  
140 mm

**76184.**



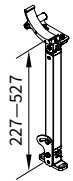
coupling bracket for the cassette in the case of rigid track-only fixture types 31 and 32

**76069.**



raised cassette bracket foot can be tilted backwards by up to 45°, head of cassette fixture bracket can be tilted forwards by up to 45°

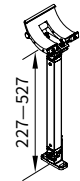
**76067.**



raised cassette bracket foot can be tilted backwards by up to 45°, head of cassette fixture bracket can be tilted forwards by up to 45°

right

**76068.**

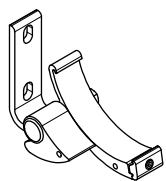


raised cassette bracket foot can be tilted backwards by up to 45°, head of cassette fixture bracket can be tilted forwards by up to 45°

for coupling point bottom fixture

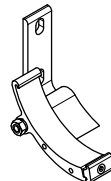
**76198.**

## Bottom fixture brackets, cassette



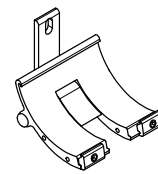
face fixture cassette bracket  
left  
5°-45° pitch adjustment range

**76063.**



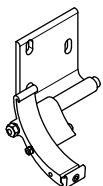
face fixture cassette bracket  
right  
5°-45° pitch adjustment range

**76064.**



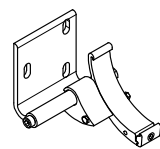
cassette coupling bracket face fixture  
central  
5°-45° pitch adjustment range

**76181.**



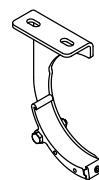
face fixture cassette bracket, wide  
left  
5°-45° pitch adjustment range

**76231.**



face fixture cassette bracket, wide  
right  
5°-45° pitch adjustment range

**76232.**



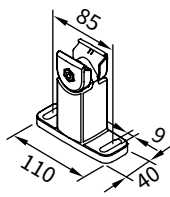
top fixture cassette bracket  
5°-20° pitch adjustment range

**77058.**

01 **Fixtures, fittings and accessories**

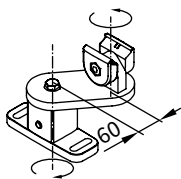
Track bracket

02



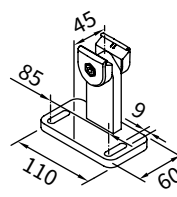
track bracket,  
with adjustable head  
100 mm

**76046.**



universal  
track bracket  
100 mm

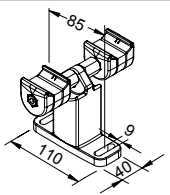
**76054.**



track bracket  
with adapter plate  
100 mm

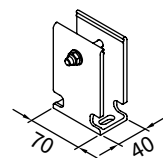
**76199.**

06



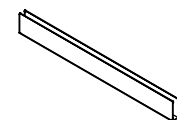
double track bracket,  
with adjustable head  
100 mm

**76191.**



track bracket for rigid  
track-only fixture

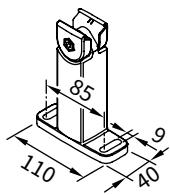
**76017.**



track bracket  
for bottom fixture  
available by the metre  
undrilled  
max. length 6 m

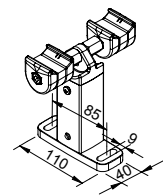
**76013.**

10



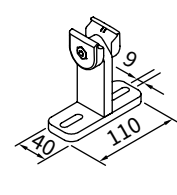
track bracket,  
with adjustable head  
140 mm

**76048.**



double track bracket  
with adjustable head  
140 mm

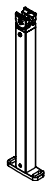
**76192.**



track bracket  
for conservatory  
transom fixture  
100 mm

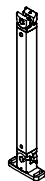
**76055.**

14



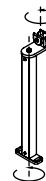
track bracket  
with adjustable head  
140–500 mm

**76047.**



track bracket,  
with adjustable head  
and foot  
200–500 mm

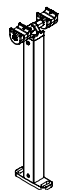
**76045.**



universal track bracket  
with adjustable head  
140–500 mm

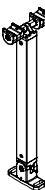
**76053.**

17



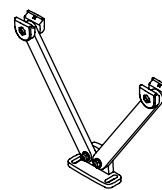
double track bracket,  
with adjustable head  
140–500 mm

**76193.**



double track bracket  
with adjustable head  
and foot  
200–500 mm

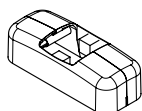
**76194.**



vario-V bracket for track  
fixture

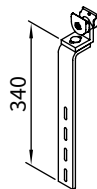
**76052.**

20



decorative cap for square  
track brackets  
standard accessory for  
bracket

**2 × 76718.**



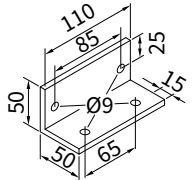
flat track bracket  
for lateral fixture  
with adjustable head

**76049.**



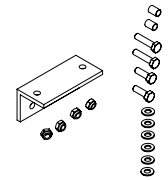
# Fixtures, fittings and accessories

## Accessories



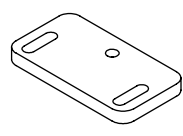
angled mounting bracket

**76098.**



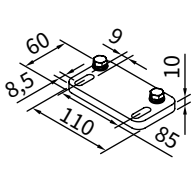
angled adapter plate for rounded mullions L/R incl. fixture bolts required in addition to fixture combination 32

**76099.**



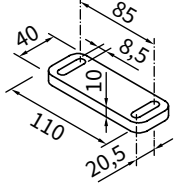
fixture plate  
110 × 60 × 10 mm

**78158.**



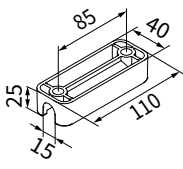
adjustable foot plate for track bracket

**78165.**



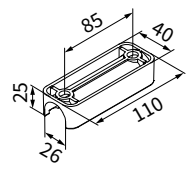
spacer plate for track bracket  
110 × 40 × 10 mm

**78570.**



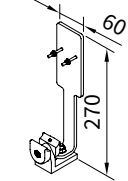
track bracket assembly for track fixture directly to glass roof mullions (14 mm in width)

**76804.**



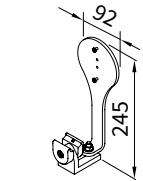
track bracket assembly for track fixture directly to glass roof mullions (25 mm in width)

**76805.**



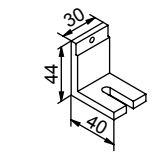
bracket  
sun, wind or rain sensor

**76050.**



bracket  
Sun / wind sensor io

**76723.**



angled bracket to prevent deflection of the cover support tube, for bracket height 100 mm

**76065.**



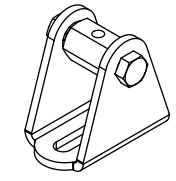
storm safety clip / closing guide

**76235.**



storm safety bracket for the cassette (recommended in windy locations and as an additional safety measure for the cassette)

**76197.**



diagonal tensioning kit  
4 wire tensioners, 1 tensioning wire (stainless steel)

**71790.**



support bracket to prevent deflection of the cover support tube, can be shortened to between 70 mm and 320 mm (with clamp plate)

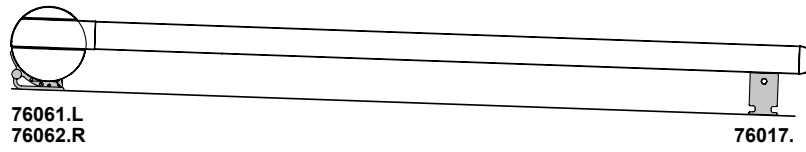
**71780.**

01  
02  
03  
04  
05  
06  
07  
08  
09  
10  
11  
12  
13  
**14**  
15  
16  
17  
18  
19  
20

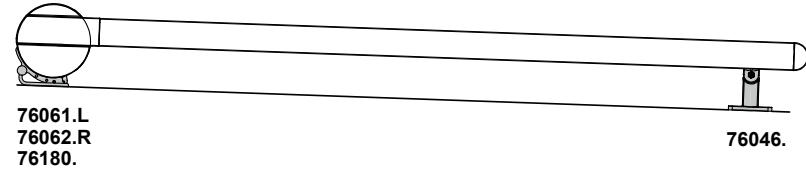
01 **Fixture types**

02 **Bottom fixture**

03 **11**



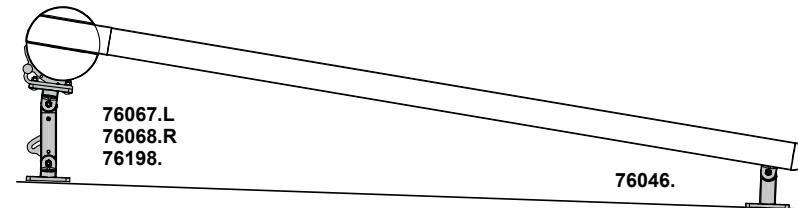
06 **14**



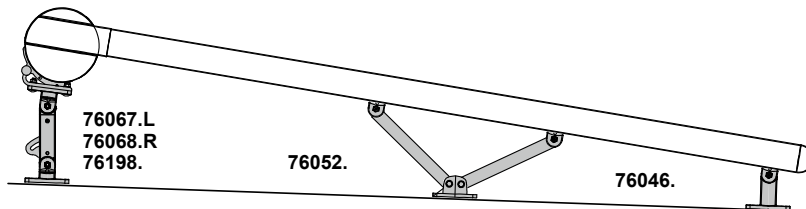
09 **21**



13 **61**  
14 **14** up to an extension  
15 of 400 cm



16 **81**  
17 from an extension  
18 of 401 cm



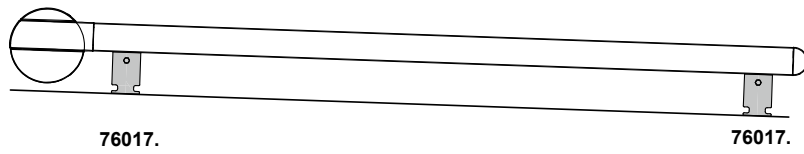
19 Range of individual bracket options: see "Fixtures, fittings and accessories".

20 Bottom fixture: in the case of extensions > 400 cm, 2 brackets per guide track. In the case of widths > 600 cm, an additional central cassette bracket or cassette support is required

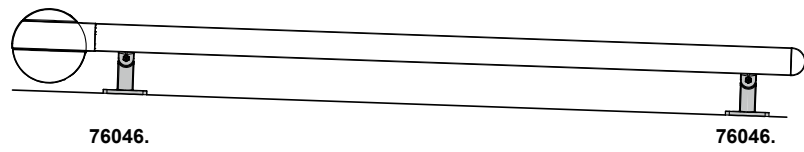
# Fixture types

Track-only fixture

31



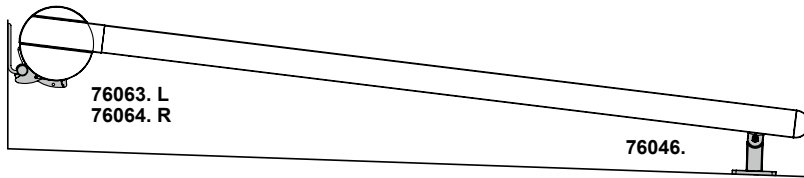
32



Face fixture

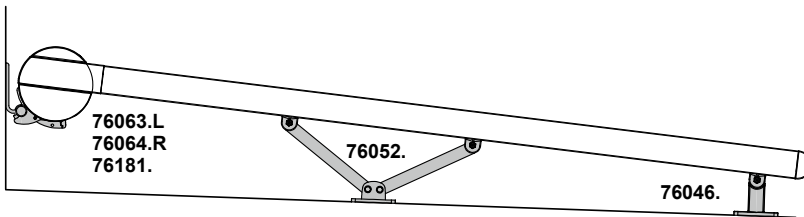
12

up to an extension  
of 400 cm



51

from an extension  
of 400 cm



22



Range of individual bracket options: see “Fixtures, fittings and accessories”.

Track-only fixture: in the case of extensions > 400 cm, 3 brackets per guide track. In the case of widths > 600 cm, an additional central cassette bracket or cassette support is required

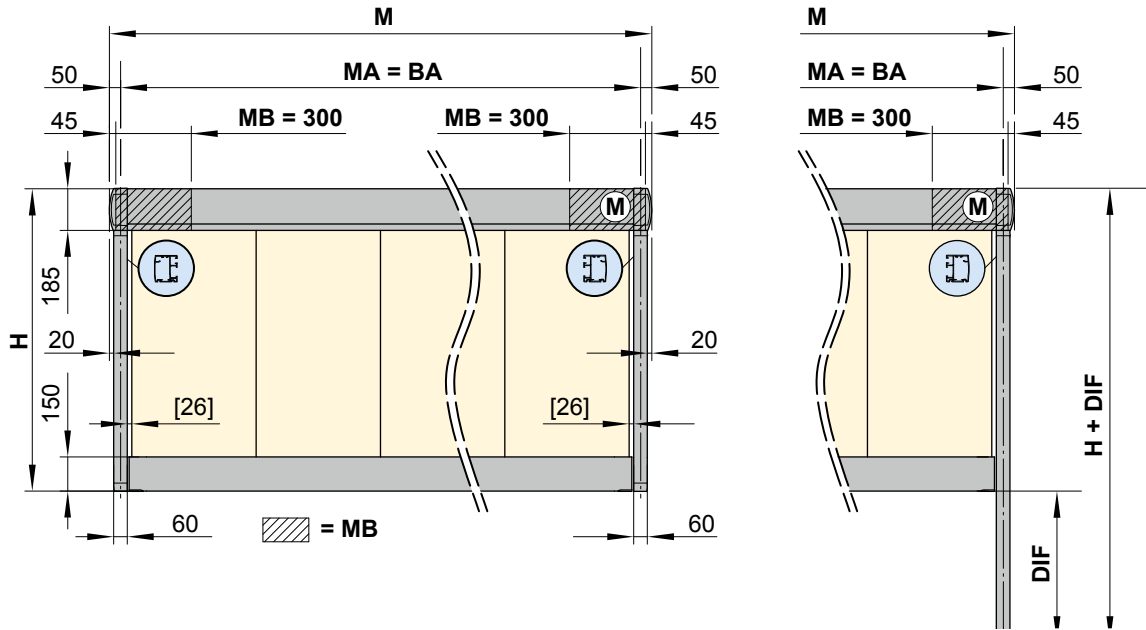
Face fixture: in the case of extensions > 400 cm, 2 brackets per guide track. In the case of widths > 600 cm, an additional central cassette bracket is required.

01  
02  
03  
04  
05  
06  
07  
08  
09  
10  
11  
12  
13  
14  
15  
16  
17  
18  
19  
20

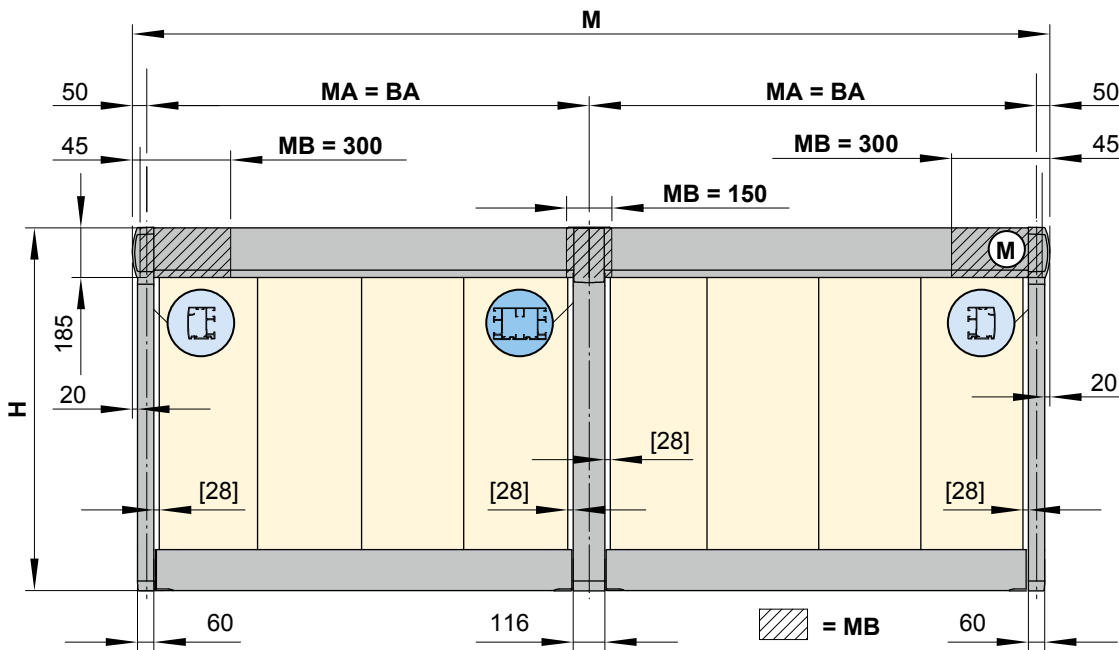
# Overview of dimensions

Single unit 1 field, 1 motor

With asymmetrical guide track extensions



Coupled unit, 2 fields, 1 motor

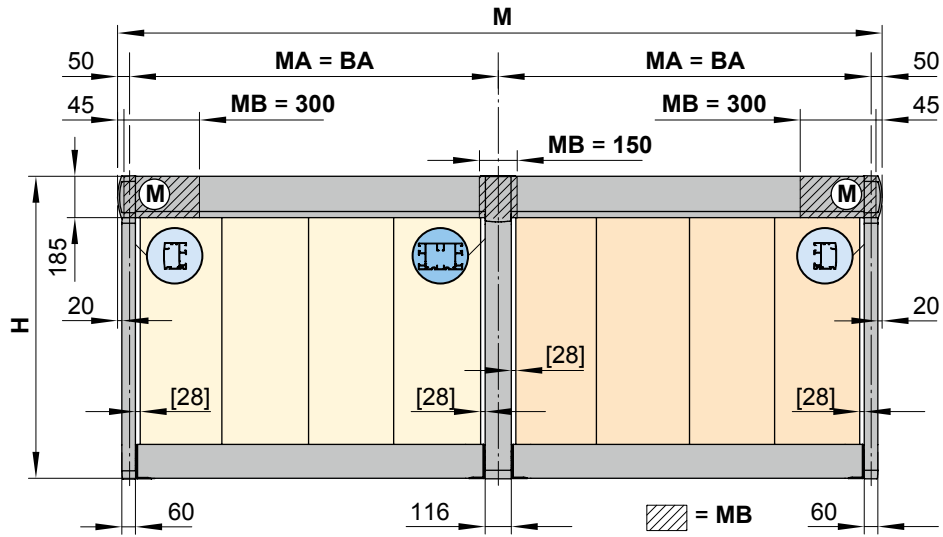


- [...] = dimensions of the cover gap in a standard unit, no cover gap in units with tracfix system
- BA = width between fixture points
- DIF = difference in measurement
- H = *order dimension* = extension
- M = overall awning width MA + 100 mm
- MA = *order dimension* = awning fixture width = fixture width
- MB = bracket fixture range
- (M) = motor

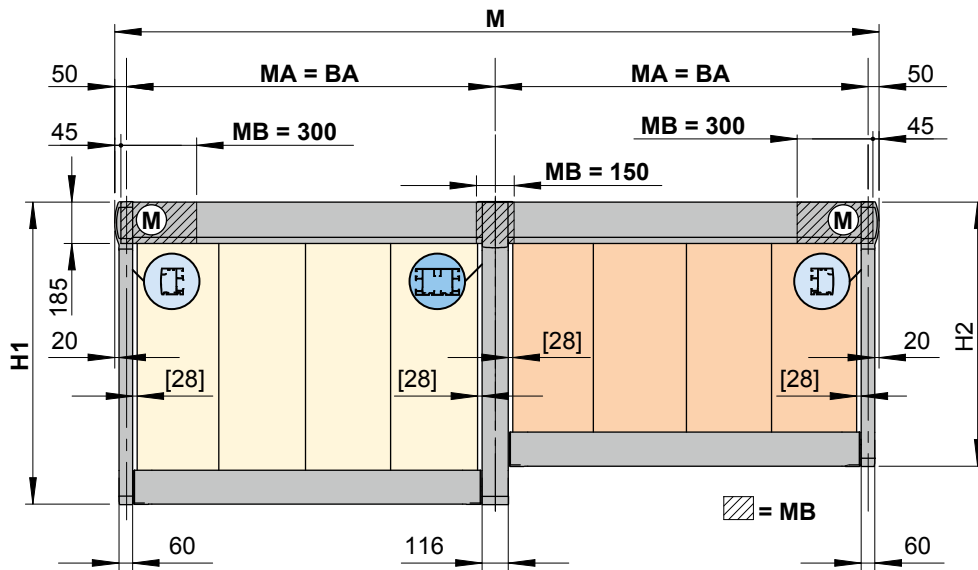
dimensions in mm

# Overview of dimensions

Coupled unit, 2 fields, 2 motors



Coupled unit, 2 fields, 2 motors, asymmetrical guide track extensions



[...] = dimensions of the cover gap in a standard unit,  
no cover gap in units with tracfix system

BA = width between fixture points

DIF = difference in measurement

H = *order dimension* = extension

H1 = longer extension

H2 = shorter extension

M = overall awning width MA + 100 mm

MA = *order dimension* = awning fixture width = fixture width

MB = bracket fixture range

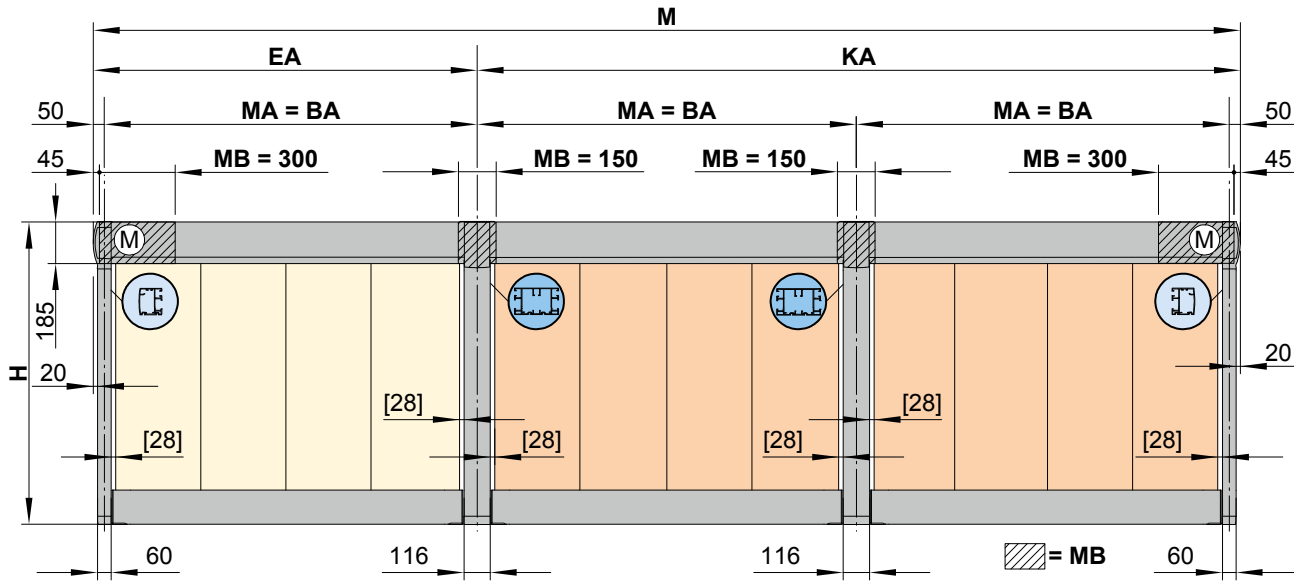
(M) = motor

dimensions in mm

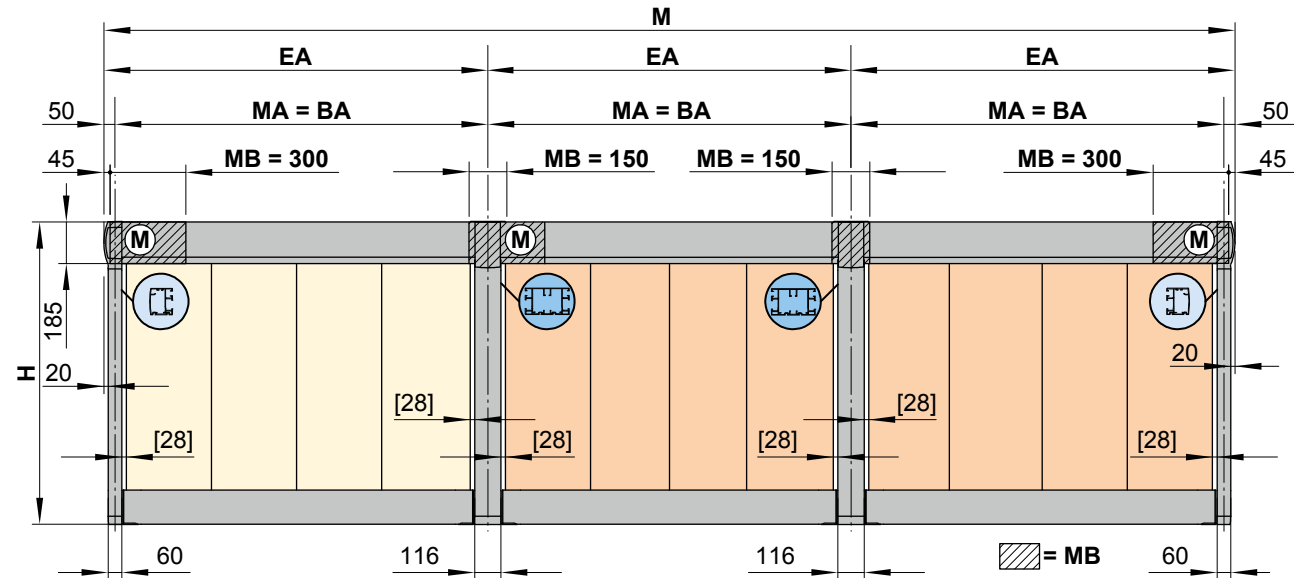
01  
02  
03  
04  
05  
06  
07  
08  
09  
10  
11  
12  
13  
14  
15  
16  
17  
18  
19  
20

01 **Overview of dimensions**

02 Coupled unit, 3 fields, 2 motors



12 Coupled unit, 3 fields, 3 motors

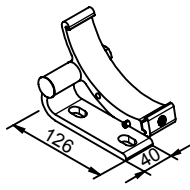


- [...] = dimensions of the cover gap in a standard unit, no cover gap in units with tracfix system
- BA = width between fixture points
- DIF = difference in measurement
- EA = single unit
- H = *order dimension* = extension
- KA = coupled unit
- M = overall awning width MA + 100 mm
- MA = *order dimension* = awning fixture width = fixture width
- MB = bracket fixture range
- (M) = motor

dimensions in mm

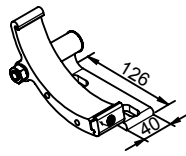
# Overview of dimensions, fixture type 11

## Fixtures, fittings and accessories



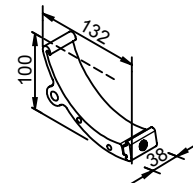
bottom fixture cassette bracket  
left

76061.



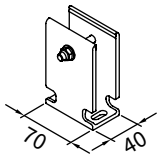
bottom fixture cassette bracket  
right

76062.



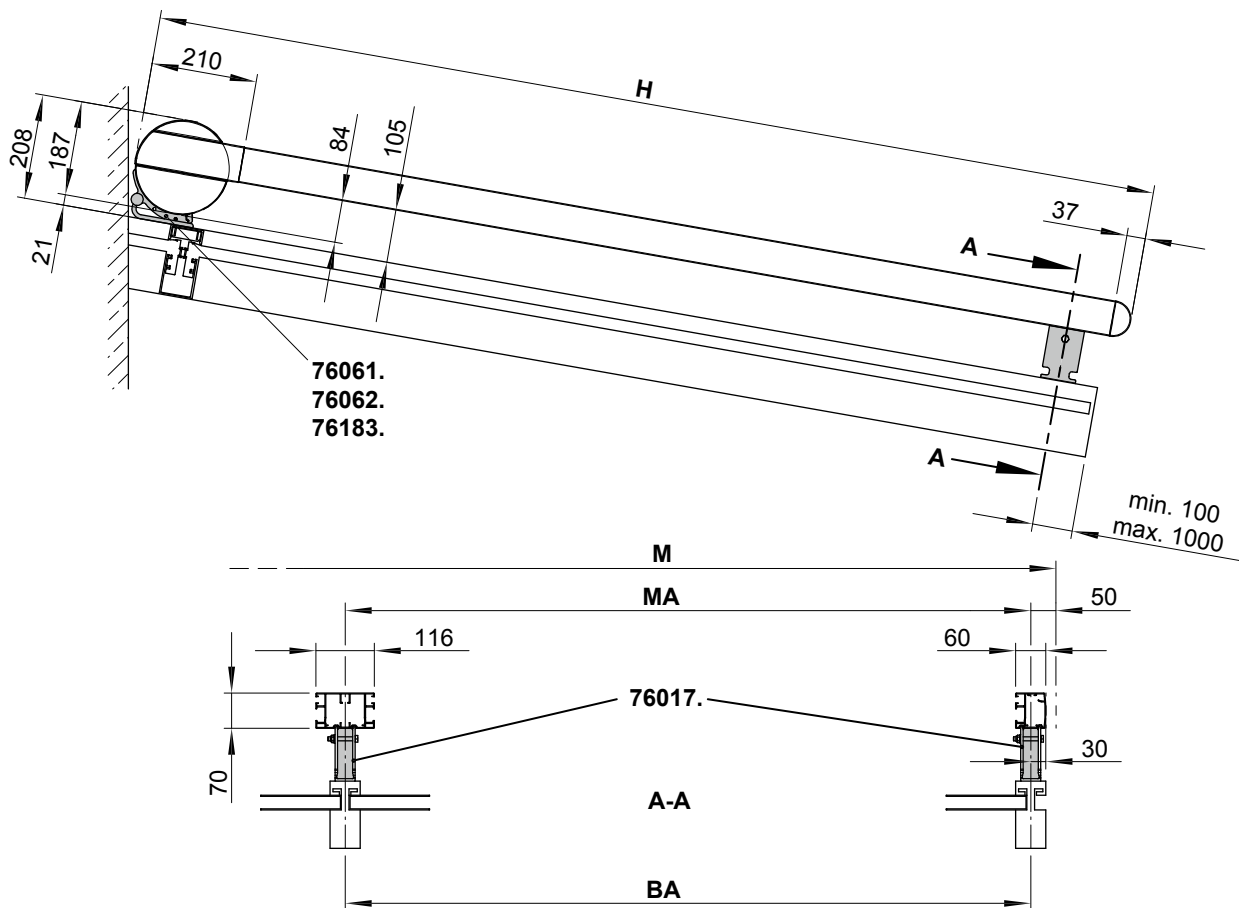
cassette support for track-only fixture  
100 mm

76183.



track bracket for rigid track-only fixture

76017.



**BA** = width between fixture points

**H** = *order dimension* = extension

**M** = overall awning width

**MA** = *order dimension* = awning fixture width = fixture width

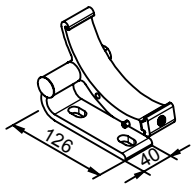
dimensions in mm

01  
02  
03  
04  
05  
06  
07  
08  
09  
10  
11  
12  
13  
**14**  
15  
16  
17  
18  
19  
20

01  
02  
03  
04  
05  
06  
07  
08  
09  
10  
11  
12  
13  
14  
15  
16  
17  
18  
19  
20

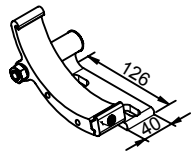
# Overview of dimensions, fixture type 14

## Fixtures, fittings and accessories



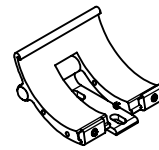
bottom fixture cassette bracket  
left

76061.



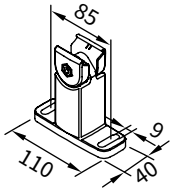
bottom fixture cassette bracket  
right

76062.



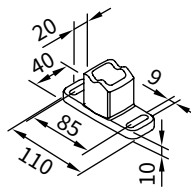
coupling bracket for the cassette, bottom fixture

76180.

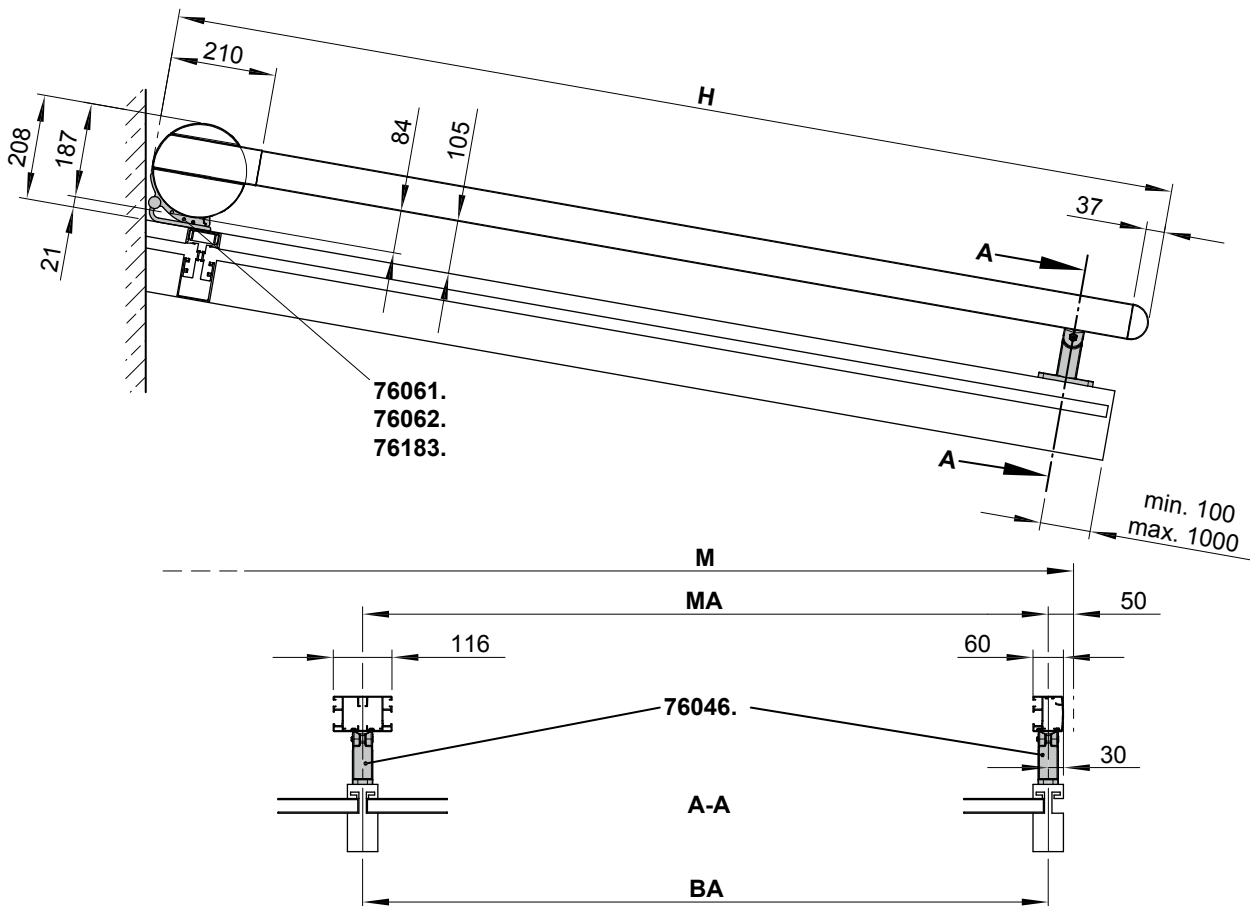


track bracket, with adjustable head  
100 mm

76046.



footprint dimensions  
track brackets, with adjustable head



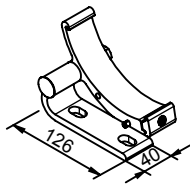
- BA = width between fixture points
- H = *order dimension* = extension
- M = overall awning width
- MA = *order dimension* = awning fixture width = fixture width

dimensions in mm



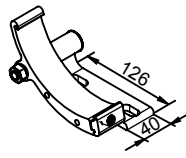
# Overview of dimensions, fixture type 21

## Fixtures, fittings and accessories



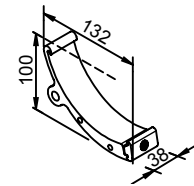
bottom fixture cassette bracket  
left

76061.



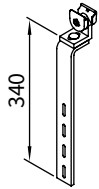
bottom fixture cassette bracket  
right

76062.



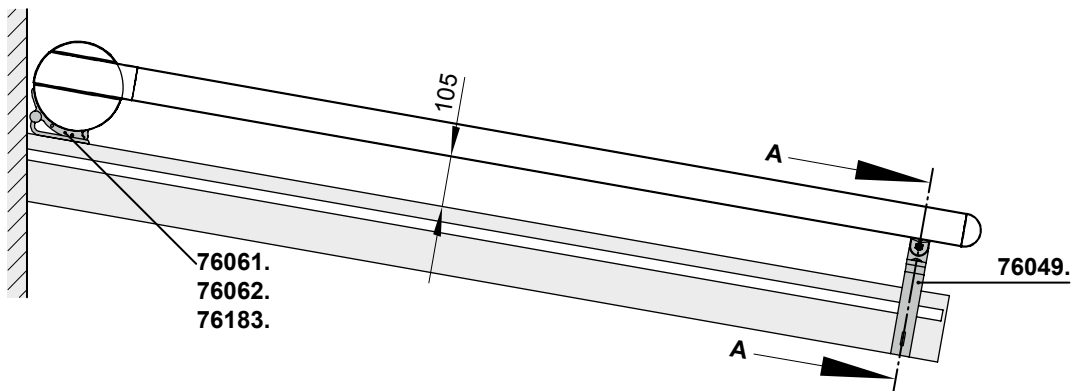
cassette support for track-only fixture  
100 mm

76183.



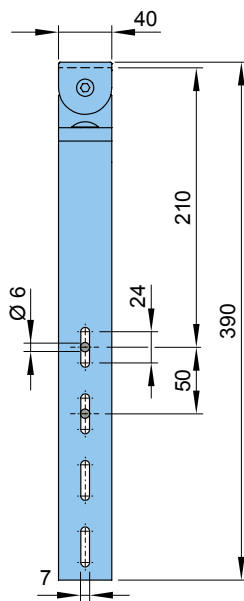
flat track bracket for lateral fixture  
with adjustable head

76049.



76061.  
76062.  
76183.

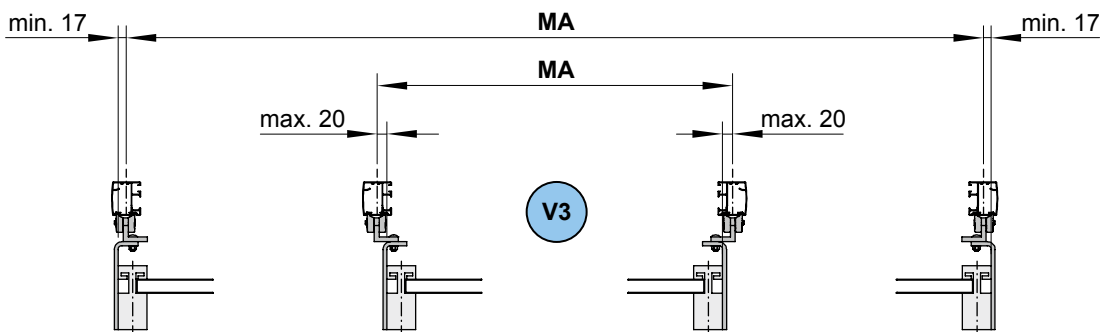
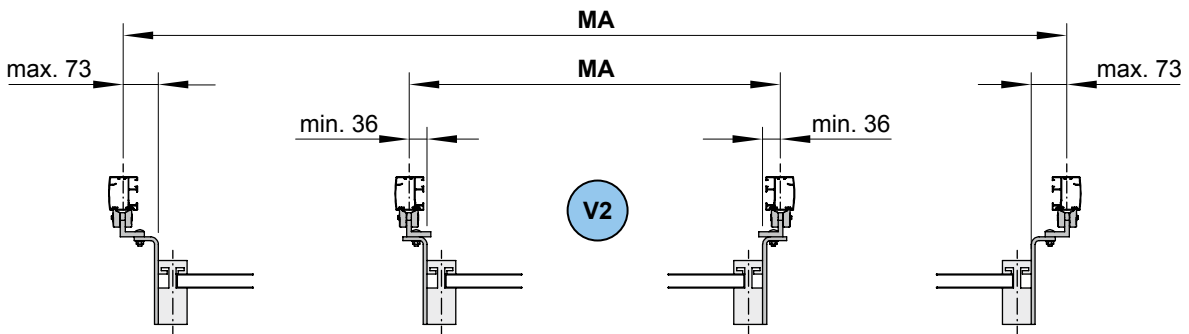
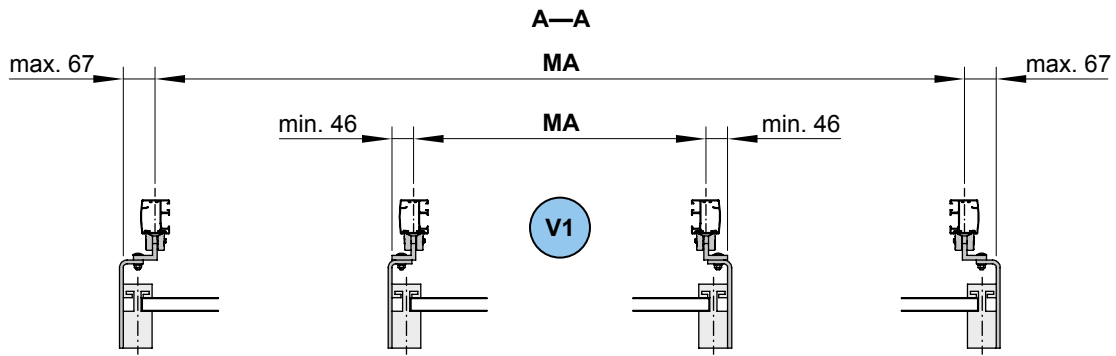
76049.



dimensions in mm

01 **Overview of dimensions, fixture type 21**

02 Alternative installation options



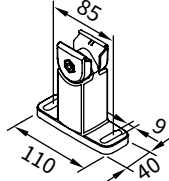
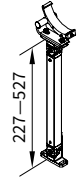
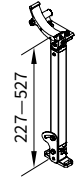
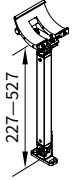
MA = order dimension = awning fixture width = fixture width

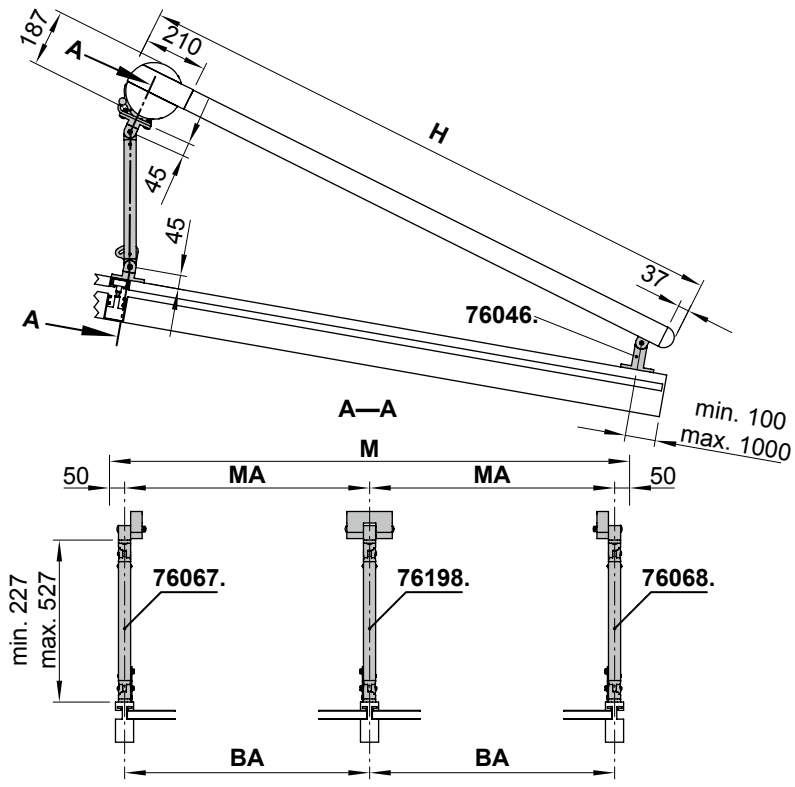
V1, V1, V3 = version

dimensions in mm

# Overview of dimensions, fixture type 61 (up to an extension of 400 cm)

## Fixtures, fittings and accessories

 <p>track bracket, with adjustable head 100 mm</p> <p><b>76046.</b></p>	 <p>raised cassette bracket foot can be tilted backwards by up to 45°, head of cassette fixture bracket can be tilted forwards by up to 45°</p> <p>left</p> <p><b>76067.</b></p>	 <p>raised cassette bracket foot can be tilted backwards by up to 45°, head of cassette fixture bracket can be tilted forwards by up to 45°</p> <p>right</p> <p><b>76068.</b></p>
 <p>raised cassette bracket foot can be tilted backwards by up to 45°, head of cassette fixture bracket can be tilted forwards by up to 45°</p> <p>for coupling point bottom fixture</p> <p><b>76198.</b></p>		



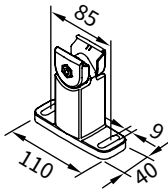
- BA = width between fixture points
- H = *order dimension* = extension
- M = overall awning width
- MA = *order dimension* = awning fixture width = fixture width

dimensions in mm

01  
02  
03  
04  
05  
06  
07  
08  
09  
10  
11  
12  
13  
**14**  
15  
16  
17  
18  
19  
20

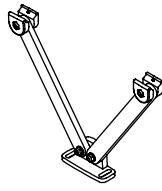
# Overview of dimensions, fixture type 81 (from an extension of 400 cm)

## Fixtures, fittings and accessories



track bracket,  
with adjustable head  
100 mm

76046.



vario-V bracket for track  
fixture

76052.



raised cassette bracket  
foot can be tilted  
backwards by up to 45°,  
head of cassette fixture  
bracket can be tilted  
forwards by up to 45°

left

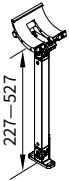
76067.



raised cassette bracket  
foot can be tilted  
backwards by up to 45°,  
head of cassette fixture  
bracket can be tilted  
forwards by up to 45°

right

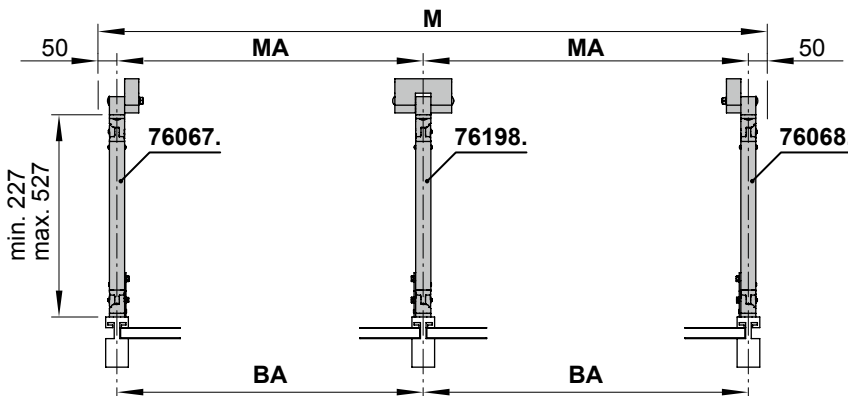
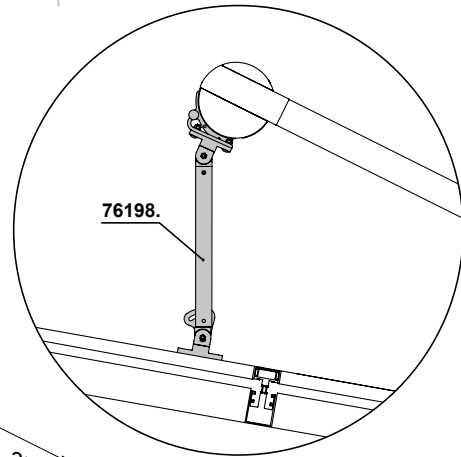
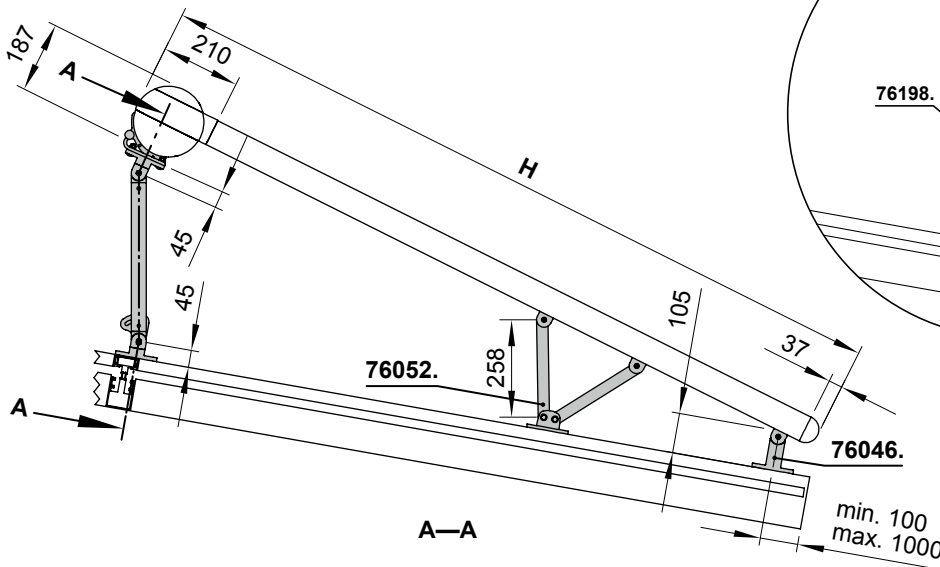
76068.



raised cassette bracket  
foot can be tilted  
backwards by up to 45°,  
head of cassette fixture  
bracket can be tilted  
forwards by up to 45°

for coupling point  
bottom fixture

76198.

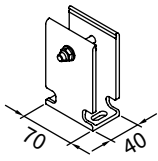


- BA = width between fixture points
- H = *order dimension* = extension
- M = overall awning width
- MA = *order dimension* = awning fixture width = fixture width

dimensions in mm

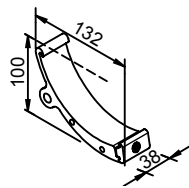
# Overview of dimensions, fixture type 31

Fixtures, fittings and accessories



track bracket for rigid track-only fixture

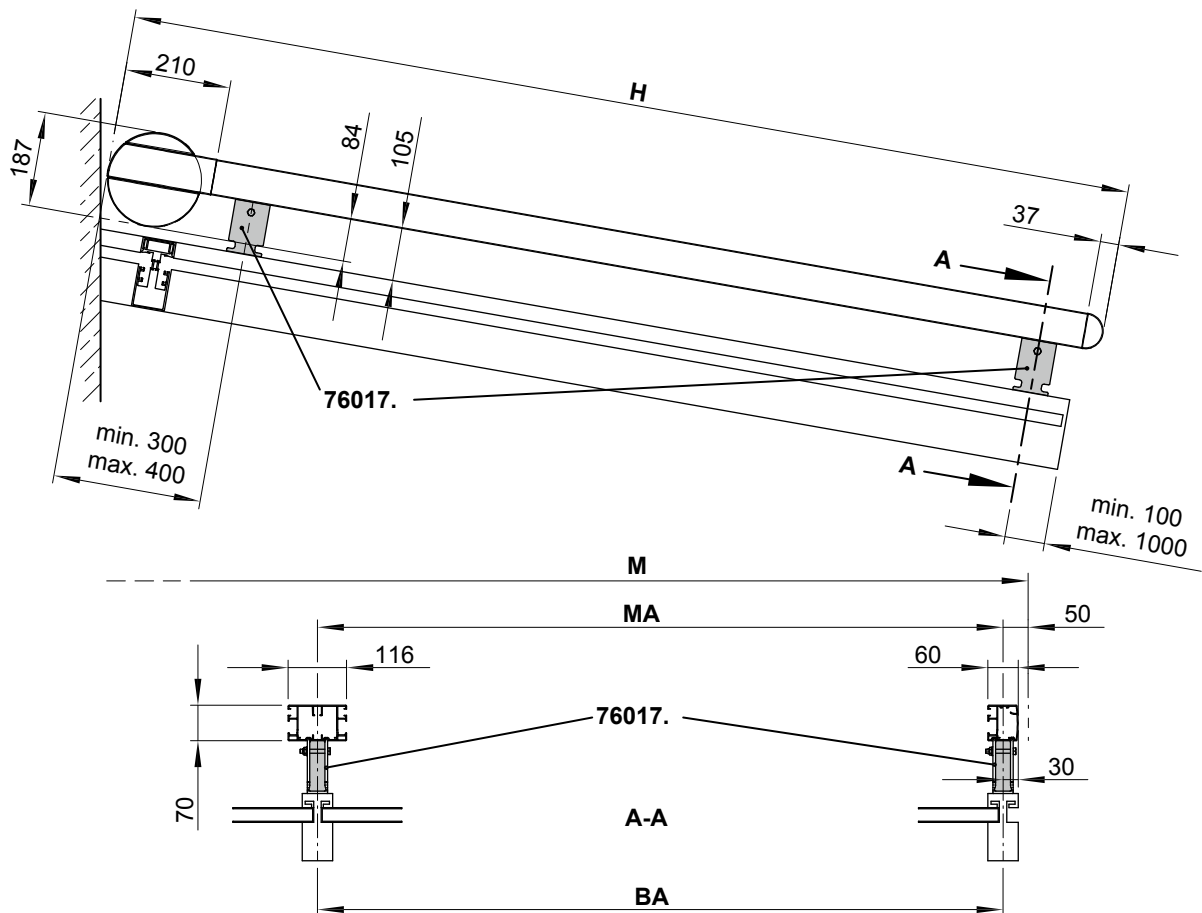
76017.



cassette support for track-only fixture

100 mm

76183.



**BA** = width between fixture points

**H** = *order dimension* = extension

**M** = overall awning width

**MA** = *order dimension* = awning fixture width = fixture width

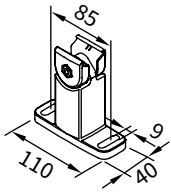
dimensions in mm

01  
02  
03  
04  
05  
06  
07  
08  
09  
10  
11  
12  
13  
**14**  
15  
16  
17  
18  
19  
20

01  
02  
03  
04  
05  
06  
07  
08  
09  
10  
11  
12  
13  
14  
15  
16  
17  
18  
19  
20

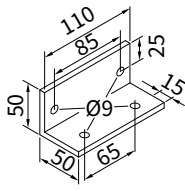
# Overview of dimensions, fixture type 32

## Fixtures, fittings and accessories



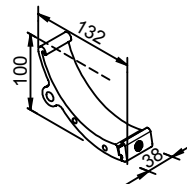
track bracket, with adjustable head  
100 mm

76046.



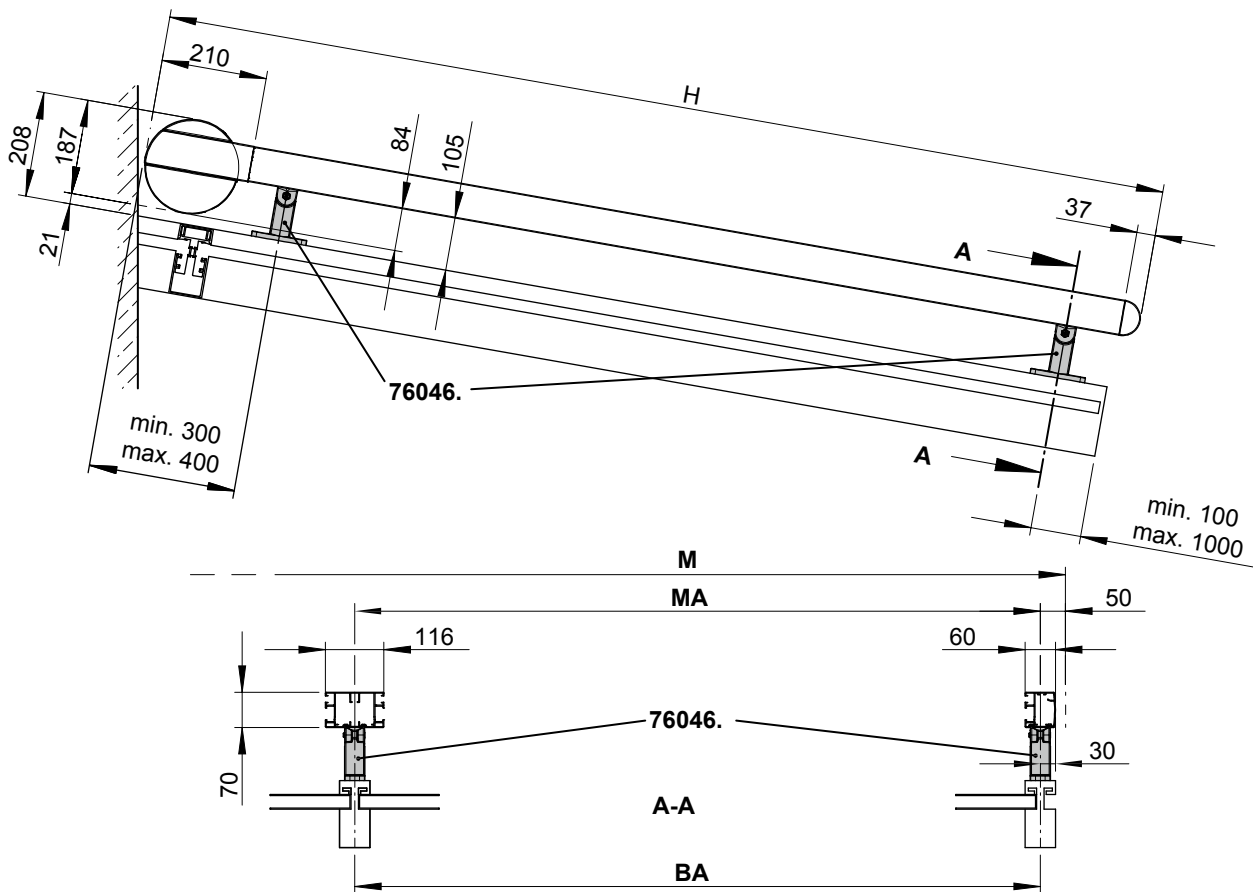
angled adapter plate for rounded mullions L/R incl. fixture bolts required in addition to fixture combination 32

76099.



cassette support for track-only fixture  
100 mm

76183.

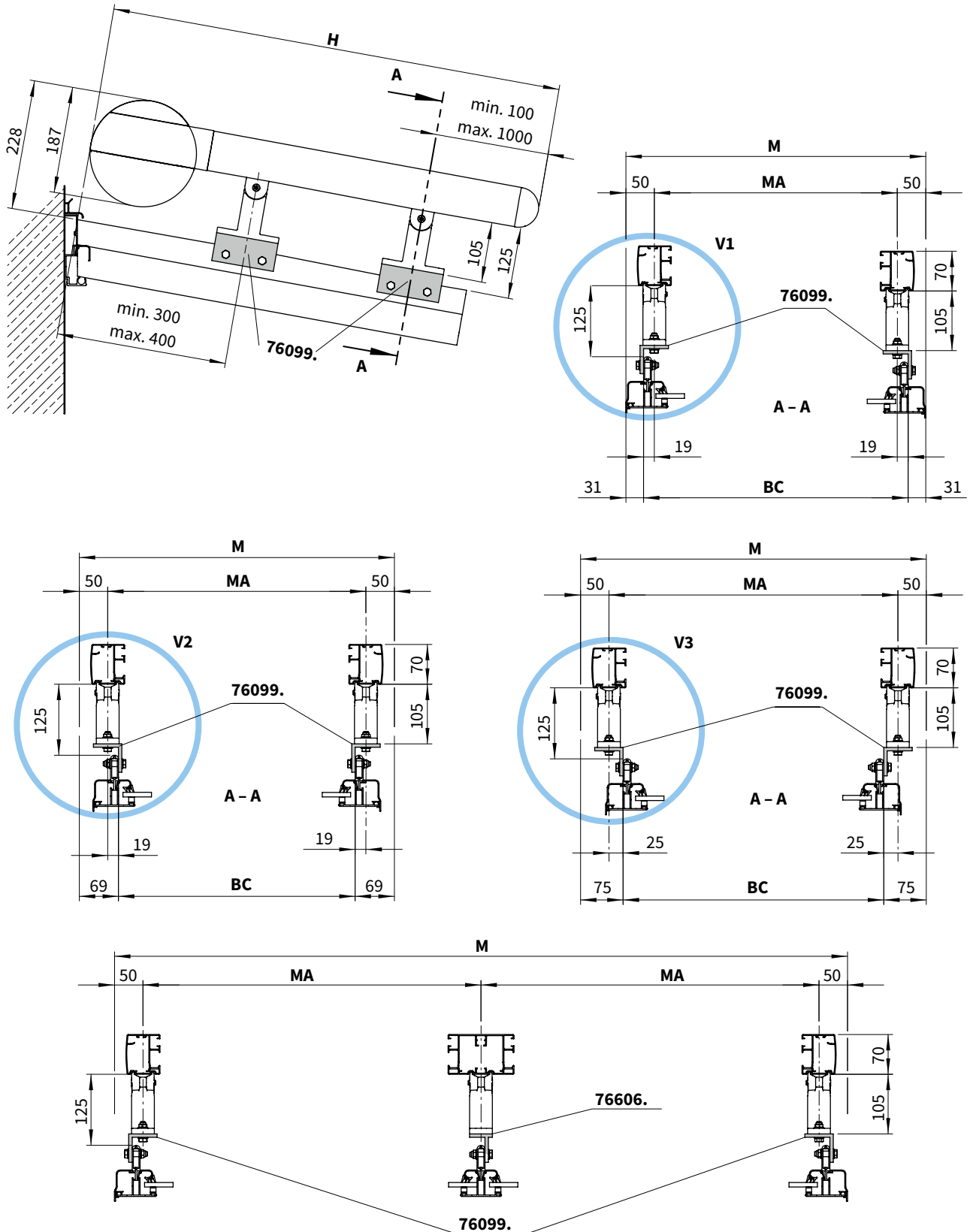


- BA = width between fixture points
- H = *order dimension* = extension
- M = overall awning width
- MA = *order dimension* = awning fixture width = fixture width

dimensions in mm

# Overview of dimensions, fixture type 32

Mullion fixture with angled installation brackets



BC = width between fixture points  
 H = *order dimension* = extension  
 M = overall awning width

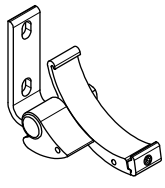
MA = *order dimension* = awning fixture width = fixture width  
 V1, V2, V3 = version

dimensions in mm

01  
02  
03  
04  
05  
06  
07  
08  
09  
10  
11  
12  
13  
14  
15  
16  
17  
18  
19  
20

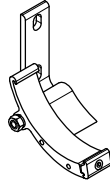
# Overview of dimensions, fixture type 12 (up to an extension of 400 cm)

## Fixtures, fittings and accessories



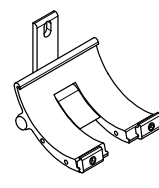
face fixture cassette bracket  
left  
5°-45°  
pitch adjustment range

76063.



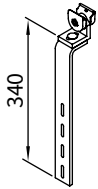
face fixture cassette bracket  
right  
5°-45°  
pitch adjustment range

76064.



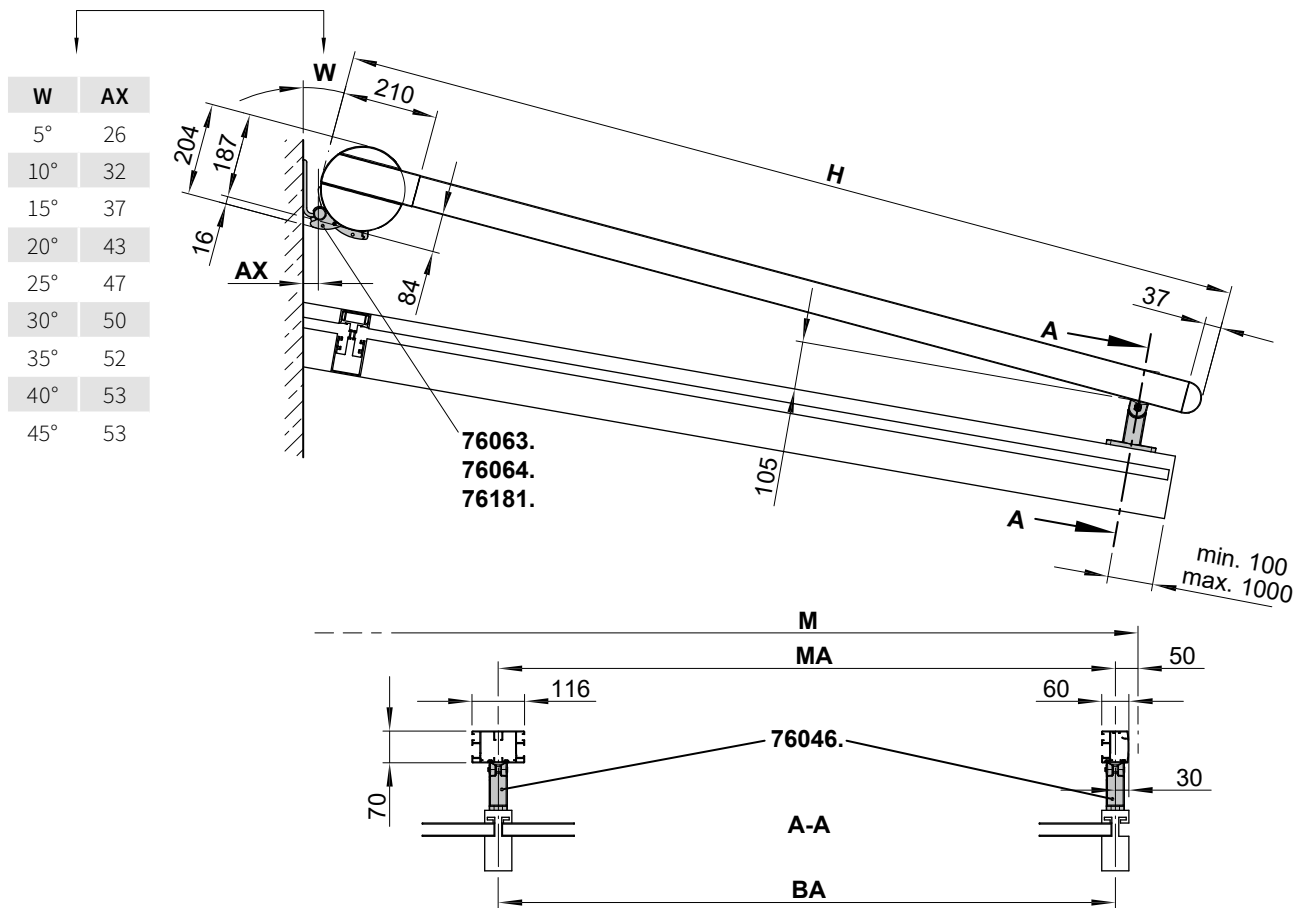
cassette coupling bracket  
face fixture  
central  
5°-45°  
pitch adjustment range

76181.



flat track bracket  
for lateral fixture  
with adjustable head

76049.



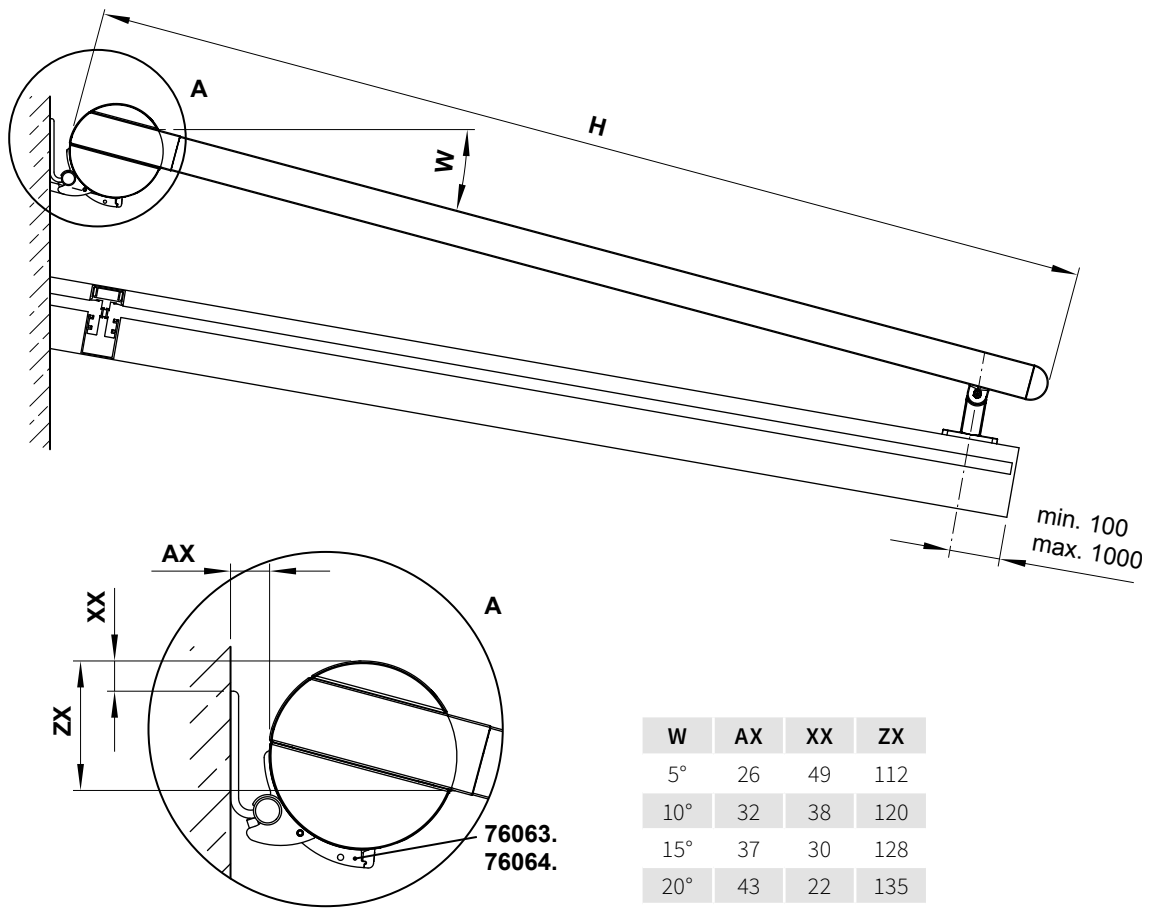
- AX** = distance from cassette to wall
- BA** = width between fixture points
- H** = *order dimension* = extension
- M** = overall awning width
- MA** = *order dimension* = awning fixture width = fixture width
- W** = pitch

dimensions in mm



# Overview of dimensions, fixture type 12 (up to an extension of 400 cm)

Face fixture and track brackets with adjustable head



W	AX	XX	ZX
5°	26	49	112
10°	32	38	120
15°	37	30	128
20°	43	22	135
25°	47	13	142
30°	50	4	149
35°	52	-5	156
40°	53	-15	161
45°	53	-24	167

- AX** = distance from cassette to wall
- H** = *order dimension* = extension
- W** = pitch
- XX** = distance upper edge bracket – cassette
- ZX** = distance upper edge cassette – guide track

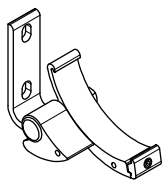
dimensions in mm

01  
02  
03  
04  
05  
06  
07  
08  
09  
10  
11  
12  
13  
**14**  
15  
16  
17  
18  
19  
20

01  
02  
03  
04  
05  
06  
07  
08  
09  
10  
11  
12  
13  
14  
15  
16  
17  
18  
19  
20

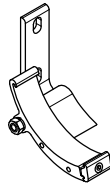
# Overview of dimensions, fixture type 51 (from an extension of 400 cm)

## Fixtures, fittings and accessories



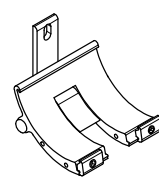
face fixture cassette bracket  
left  
5°-45°  
pitch adjustment range

**76063.**



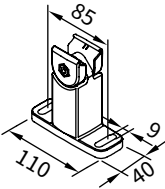
face fixture cassette bracket  
right  
5°-45°  
pitch adjustment range

**76064.**



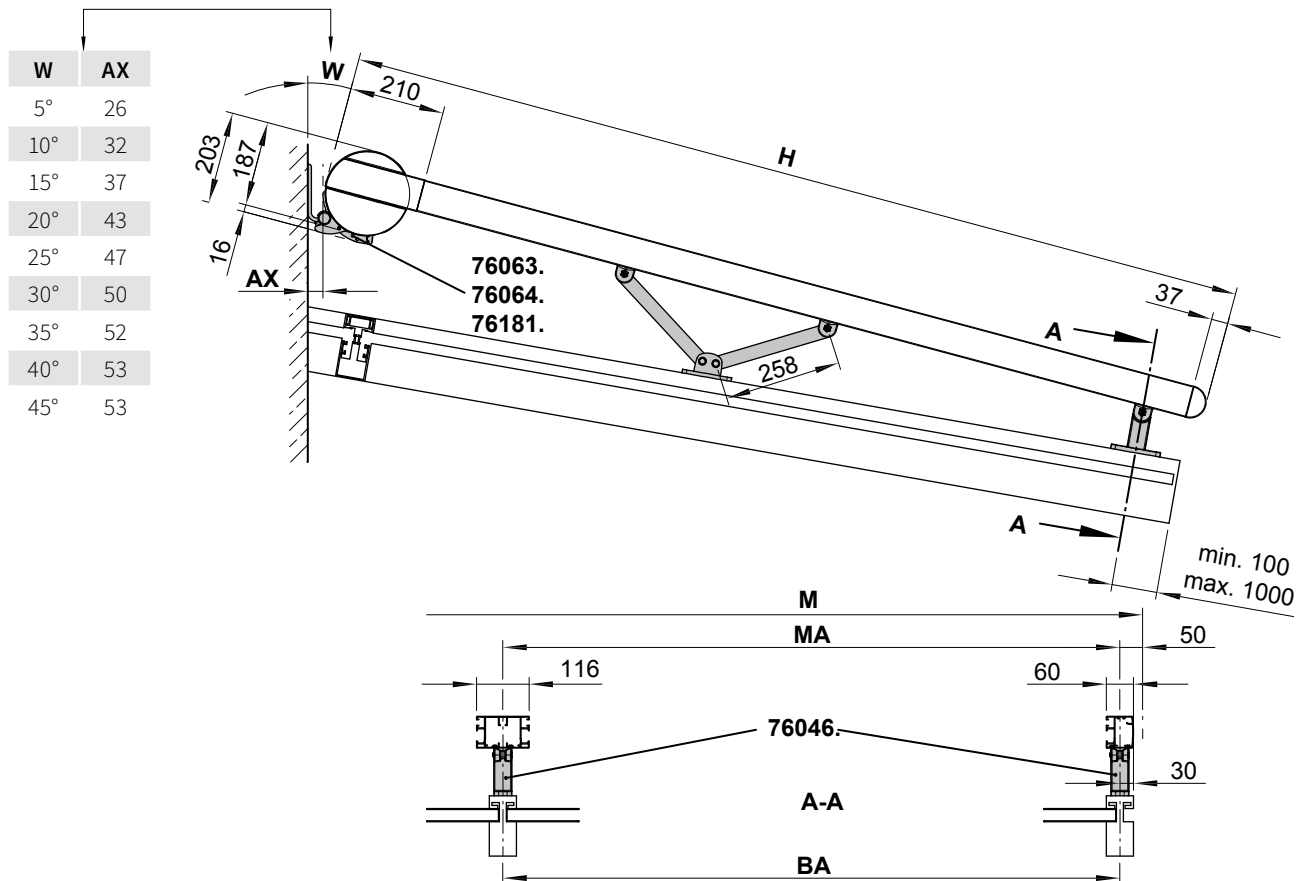
cassette coupling bracket  
face fixture  
central  
5°-45°  
pitch adjustment range

**76181.**



track bracket,  
with adjustable head  
100 mm  
refer also to the section  
"installation dimensions"

**76046.**

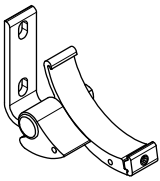


- AX** = distance from cassette to wall
- BA** = width between fixture points
- H** = *order dimension* = extension
- M** = overall awning width
- MA** = *order dimension* = awning fixture width = fixture width
- W** = pitch

dimensions in mm

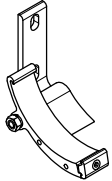
# Overview of dimensions, fixture type 22

## Fixtures, fittings and accessories



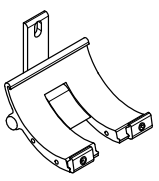
face fixture cassette bracket  
left  
5°-45°  
pitch adjustment range

**76063.**



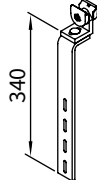
face fixture cassette bracket  
right  
5°-45°  
pitch adjustment range

**76064.**



cassette coupling bracket  
face fixture  
central  
5°-45°  
pitch adjustment range

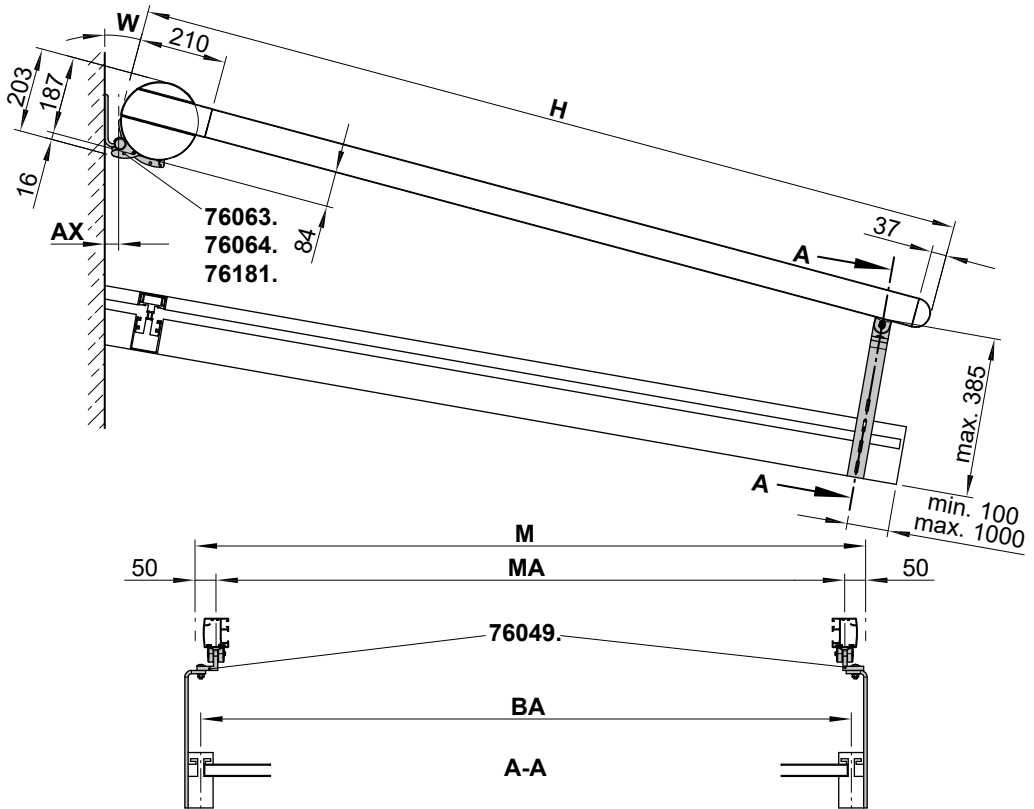
**76181.**



flat track bracket for  
lateral fixture with  
adjustable head

**76049.**

W	AX
5°	26
10°	32
15°	37
20°	43
25°	47
30°	50
35°	52
40°	53
45°	53



- AX** = distance from cassette to wall
- BA** = width between fixture points
- H** = *order dimension* = extension
- M** = overall awning width
- MA** = *order dimension* = awning fixture width = fixture width
- W** = pitch

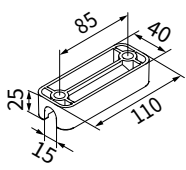
dimensions in mm

01  
02  
03  
04  
05  
06  
07  
08  
09  
10  
11  
12  
13  
14  
15  
16  
17  
18  
19  
20

01  
02  
03  
04  
05  
06  
07  
08  
09  
10  
11  
12  
13  
14  
15  
16  
17  
18  
19  
20

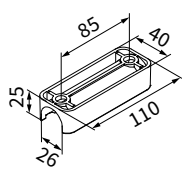
# Overview of dimensions, additional brackets for mullion fixture

Fixtures, fittings and accessories



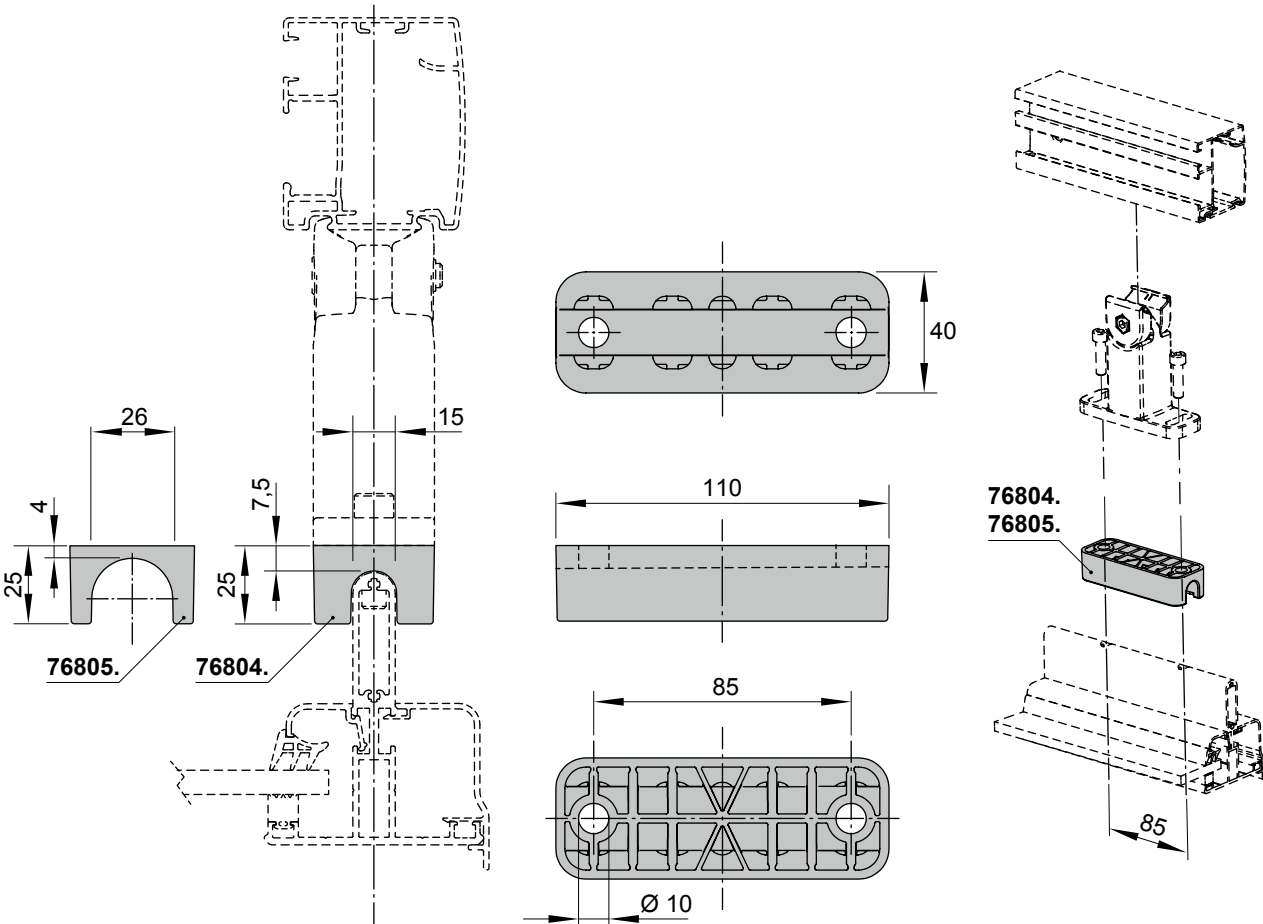
track bracket assembly for track fixture directly to glass roof mullions (width 14 mm)

76804.



track bracket assembly for track fixture directly to glass roof mullions (width 25 mm)

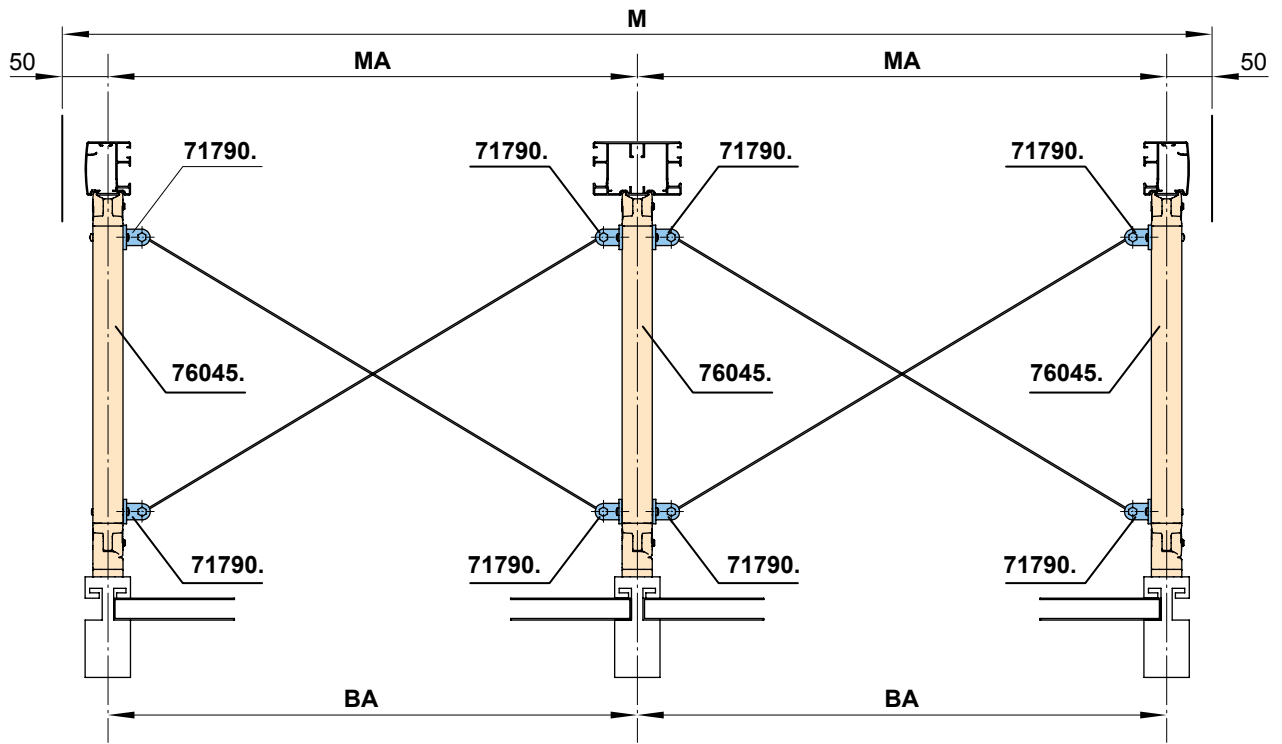
76805.



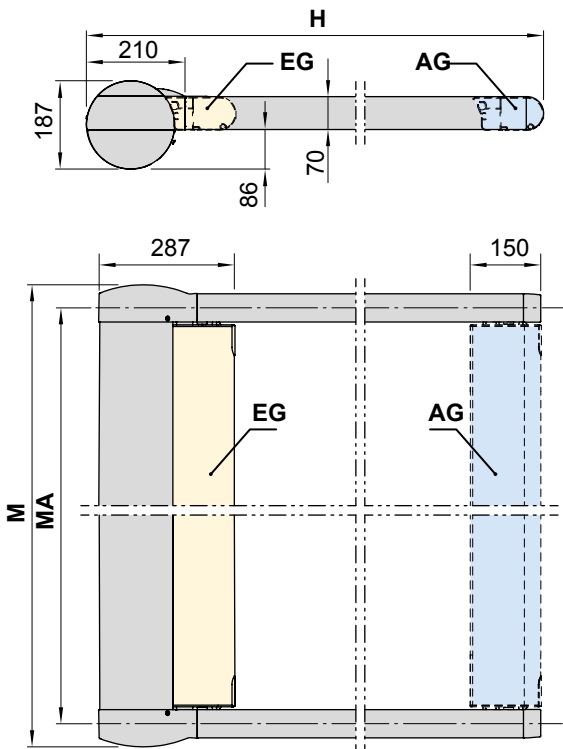
dimensions in mm

# Overview of dimensions

Diagonal tensioning kit for raised bottom fixture



Distance from the back of the cassette to the leading edge of the front profile



**AG** = extended

**BA** = width between fixture points

**EG** = retracted

**H** = *order dimension* = extension

**M** = overall awning width

**MA** = *order dimension* = awning fixture width = fixture width

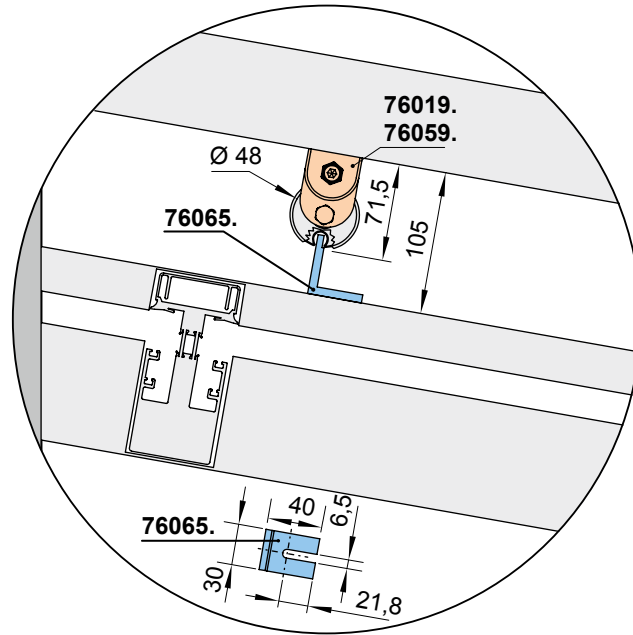
dimensions in mm

01  
02  
03  
04  
05  
06  
07  
08  
09  
10  
11  
12  
13  
14  
15  
16  
17  
18  
19  
20

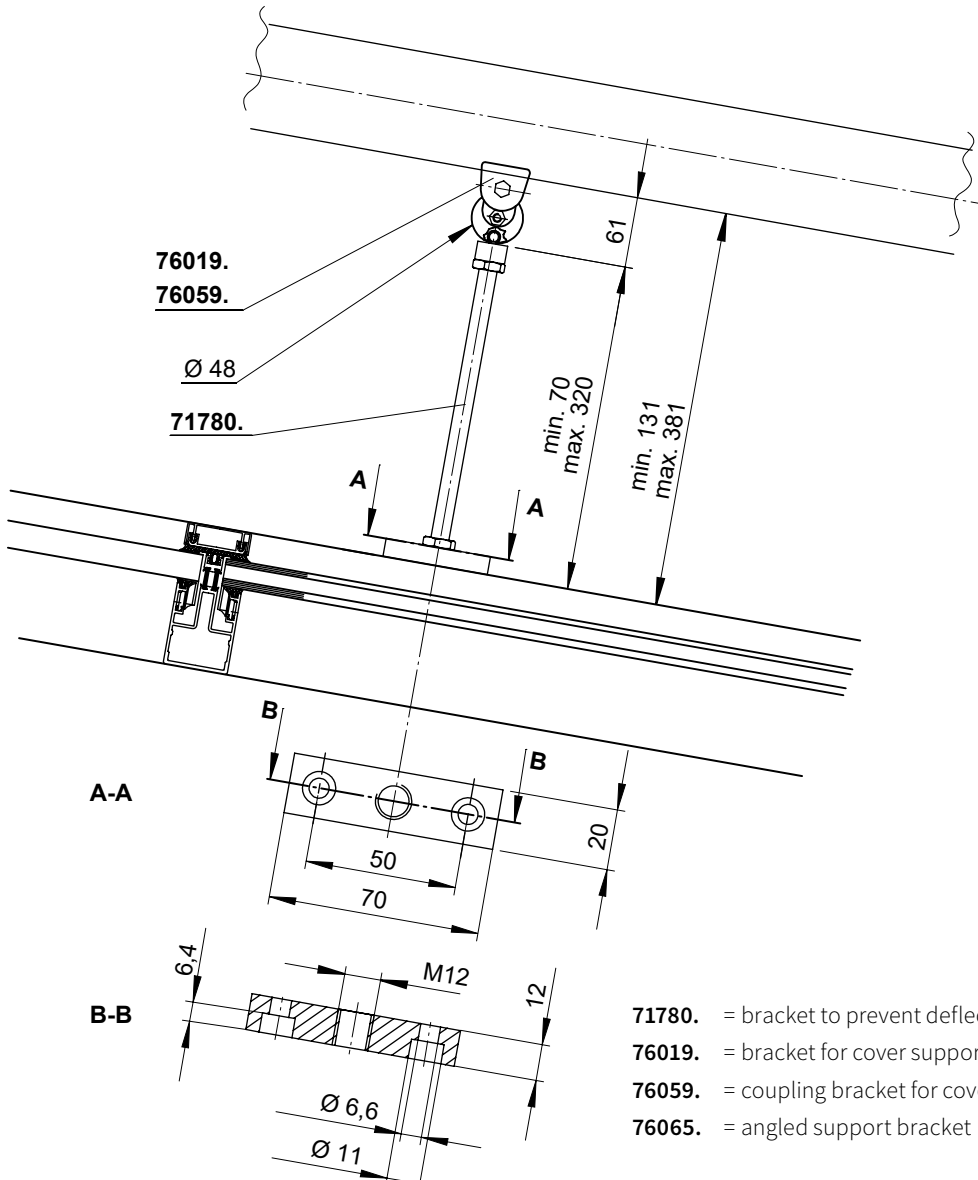
01  
02  
03  
04  
05  
06  
07  
08  
09  
10  
11  
12  
13  
14  
15  
16  
17  
18  
19  
20

# Overview of dimensions

Support to prevent deflection of the cover support tube, 100 mm



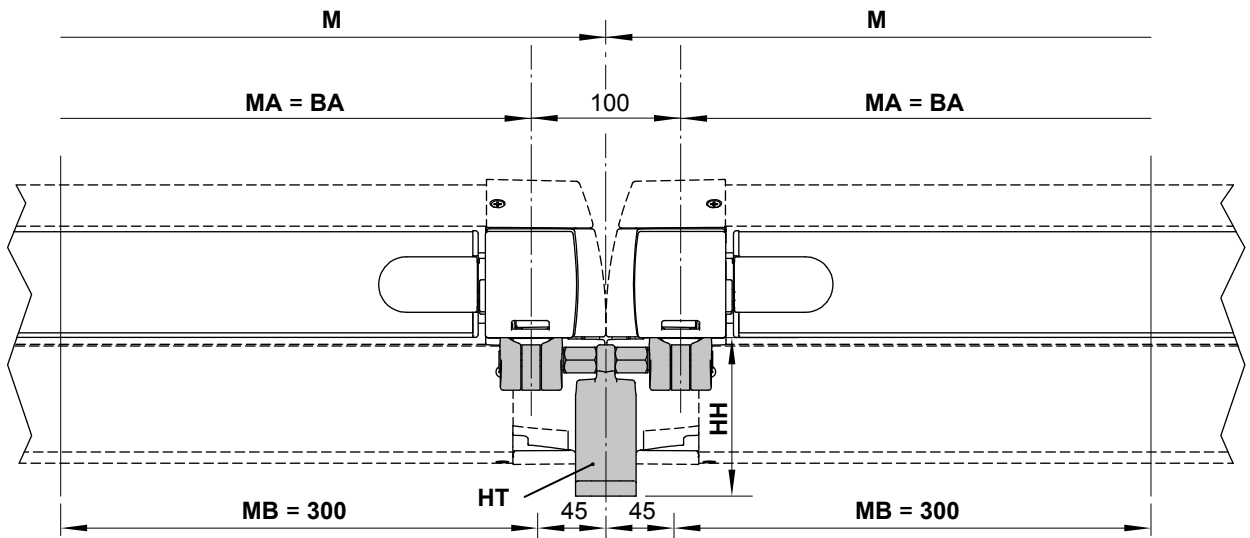
Support to prevent deflection of the cover support tube, can be shortened on site, height range 70–320 mm



- 71780. = bracket to prevent deflection of the cover support tube
- 76019. = bracket for cover support tube
- 76059. = coupling bracket for cover support tube
- 76065. = angled support bracket

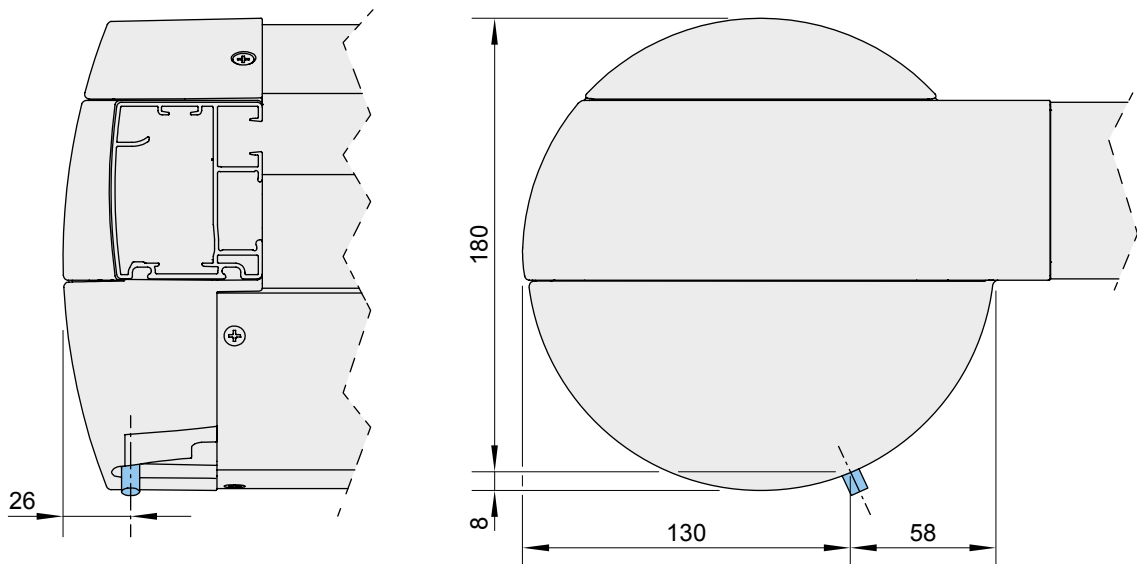
dimensions in mm

## Overview of dimensions, double track bracket for single units



HT	76191.	76192.	76193.	76194.
HH	105	145	145-505	205-505

## Motor cable exit point



**BA** = width between fixture points

**HH** = bracket height

**HT** = bracket

**M** = overall awning width

**MA** = *order dimension* = awning fixture width = fixture width

**MB** = bracket fixture range (cassette fixture bracket)

**76191.** = double track bracket 100 mm

**76192.** = double track bracket 140 mm

**76193.** = double track bracket 140-500 mm

**76194.** = double track bracket 200-500 mm

dimensions in mm

---

01

02

03

04

05

06

07

08

09

10

11

12

13

**14**

15

16

17

18

19

20